



**BADAN PERENCANAAN DAN PENGENDALIAN PEMBANGUNAN DAERAH**  
*(Regional Planning and Monitoring Agency) WEST PAPUA PROVINCE*

**Harmonisation of Support to  
Human Development Programmes  
in West Papua Province**

**December 2007**



Foto oleh Muhammad Farid

**A cooperation between UNDP, the local Government and multi stakeholders in West Papua.**



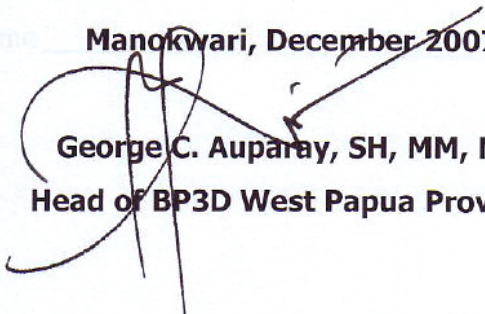
**Foreword**  
**Head of BP3D – West Papua Province**

The achievement of Millennium Development Goals (MDGs) which has been announced since September 2000 constitutes the responsibility of the central and local government and development partners in Indonesia included West Papua Province. Today, many organisations and countries have become development partners and committed to provide assistances for the achievement of MDGs in West Papua Province. Various programme assistances from development partners need to be well coordinated as an effort to prevent program over-lapping in the field. Therefore, such programmes would bring maximal benefit for the people of West Papua Province.

The “Harmonisation of Support to Human Development Programme in West Papua Province” booklet is designed to be an inclusive source of information on development partners working in West Papua Province, what are their areas of programme sectors and locations. Expectantly, this Booklet will help development partners in planning process appropriately as well as in strengthening the mutual coordination and collaboration amongst the development partners in the programme implementation. By doing so, the efficiency and effectiveness of the development programme assistance could be improved.

As the enclosed words, we wish to sincerely convey appreciation for all tremendous supports and collaboration of all parties that have participated in designing this booklet. We recognize that in effort to provide valid and comprehensive information, we truly need the participation of the development partners in the process of data collection. Without your incredible contribution, this booklet might be still an unfinished work. To keep up-to-date booklet information, we hope that in the future, there will be more development partners submit their up-to-date project information to us.

Hoping this booklet will benefit all parties truly committed to develop West Papua Province.

**Manokwari, December 2007**  
  
**George C. Auparay, SH, MM, MH**  
**Head of BP3D West Papua Province**

## **Table of Content**

Foreword Head of BP3D West Papua Province _____	i
Table of Content _____	ii

### **Health**

Indonesia HIV/AIDS Prevention and Care Project (IHPCP) Phase 2 – <i>GRM, Burnet - AusAID</i> _____	1
Expansion of DOTS Projects in Papua Province – <i>Global Fund, National and Local Government</i> _____	4
Leprosy Control Program - <i>NLR</i> _____	6
Life Skills and Peer Education for HIV and AIDS prevention and care among young people in Papua – <i>UNICEF – Government of Netherlands</i> _____	9
Malaria Program in Eastern Indonesia – <i>UNICEF, USAID, Global Fund</i> _____	12
Women and Children Health Programme in Papua – <i>UNICEF, AusAID</i> _____	14
Basic Human Services – HIV/AIDS – <i>FHI - USAID</i> _____	17
Basic Human Services – Tuberculosis – <i>KNCV - USAID</i> _____	19
Basic Human Services – Malaria – <i>UNICEF, USAID</i> _____	21
Support for Papua and West Papua Province – <i>WHO, FHI, Local Government</i> _____	23

### **Education**

Literacy Program – <i>SIL – Local Government, Oikonomos, CIDA, UNDP</i> _____	25
Creating Learning Communities for Children (CLCC) Phase 2 – <i>UNICEF, UNESCO, NZAID</i> _____	28
Basic Education – Decentralized Basic Education – <i>EDC, RTI - USAID</i> _____	32
BERMUTU-Better Education through Reformed Management and Universal Teacher Upgrading – <i>World Bank, IDA, IBRD, Government of Netherlands</i> _____	34

### **Local Economy Development**

Papua Indigenous Peoples Empowerment (PIPE) Programme – <i>ILO – Government of Japan</i> _____	36
--	----

### **Basic Infrastructure**

Water and Environmental Sanitation Programme - <i>UNICEF</i> _____	39
--	----

### *Village Level Capacity Development*

Capacity 2015 – Partnerships for Sustainable Development in Papua & West Papua – <i>UNDP, Beyond Petroleum</i> _____	42
Partnerships for e-Prosperity for the Poor (PePP) - <i>UNDP</i> _____	46
People-centred Development Programme - Strengthening Government and CSOs Capacities in Achieving Millennium Development Goals – <i>UNDP, Government of Netherlands, NZAID</i> _____	48

### *Sustainable Environment Management*

Can Decentralization Work for Forests and the Poor? – <i>ACIAR - AusAID</i> _____	51
---	----

### *Vocational Training/Human Resources Development*

Vocational Training Projects - Papua Training Center - <i>SIL</i> _____	53
---	----

### *Other*

Cultural (Language) Projects in Papua and West Papua Province - <i>SIL</i> _____	57
Bird's Head Governance Initiative – <i>BP Foundation, USAID</i> _____	60
Democracy and Decentralized Governance - The Bird's Head Governance Initiative – <i>RTI - USAID</i> _____	62
Indonesia Regional Elections Program – <i>TAF - AusAID</i> _____	64
Support the Formulation of RAPERDASUS Adat Court and Strengthen Adat Institutions in Five Model Districts in Papua and West Papua – <i>Partnership - SIDA</i> _____	65

### *Annex*

Matrix of Implementing Agency – Donor Agency in West Papua Province	
---	--



Project Information Sheet

**Indonesia HIV/AIDS Prevention and Care Project (IHPCP) Phase 2**

Contributed by AusAID

**Implementing Agency:**

GRM International and Burnet Institute  
 Office of Coordinating Minister for People's Welfare Republic of Indonesia  
 Jl. Merdeka Barat No.3 Jakarta Pusat-10110  
 PO Box 3271, JKP 10032  
 Phone: (021) 3505561  
 Fax: (021) 3505564

Team Leader Australia : Tim Mackay  
 Email : [tmackay@ihpcp.or.id](mailto:tmackay@ihpcp.or.id)

IHPCP Papua  
 Mr. Ramly Achmad Lie  
 Provincial Coordinator  
 Kompleks Sekretariat KPA Provinsi Papua  
 Jl. Kesehatan No.2 Dok II Jayapura  
 Phone: (0967) 531025  
 Fax: 0967 537714  
 Email: [achmadr@ihpcppapua.or.id](mailto:achmadr@ihpcppapua.or.id)

**Funding:**

Fiscal Year 06/07 (July 06-July 07):  
 A \$ 1,171,680.

**Implementing Partners:**

- National AIDS Commission (NAC)
- Provincial Papua and West Papua AIDS Commission (KPAP)
- District/City AIDS Commission (KPAD) in Papua and West Papua Provinces
- Health Dept, Mimika District
- Radio of Republic of Indonesia (RRI) Jayapura, Wamena, Biak, Serui, Nabire, Merauke

**Project Description:**

**The objective of IHPCP:**

- Strengthen the capacity of the National AIDS Commission (NAC), Provincial and District AIDS Commission (KPAP/KPAD), and NGOs for evidence-based strategic planning, coordination and policy development.
- Reduce the risk of sexually transmitted HIV among identified population groups (men who buy sex, sex workers and men who have sex with men).
- Reduce the risk of HIV transmission through injecting drug use using a public health approach.
- Improve the quality and utilization of care, support, and treatment for People Living with HIV and vulnerable population groups.



**Activities:**

- Provincial and District AIDS Commission (KPAP and KPAD): Providing technical assistance in developing HIV policy and strategy, and program development; four (4) staff to work on media relations, behavior communication, care, support and treatment (CST) and capacity building in KPAP and KPAD. IHPCP Papua also provides additional support for KPAP/KPAD in doing advocacy to local parliament, support to attend training, study tours and HIV conferences.
- Health Department, Mimika District: Strengthen the capacity of Puskesmas to improve community health services through HIV/AIDS and Sexually Transmitted Diseases (STD), Voluntary Counseling and Testing (VCT) and CST programs.
- Radio of Republic of Indonesia (RRI) Jayapura and other five RRI Stations. Increase community knowledge and awareness of HIV through radio programs.

**Working sector:**

- 1-1 Food & Nutrition
- 1-2 Health (HIV/AIDS)
- 1-3 Education
- 1-4 Local Economy
- 1-5 Gender Equality
- 1-6 Basic Infrastructure
- 1-7 Village level Capacity Development
- 2-0 Sustainable Environment management
- 3-0 Vocational Training / Human Resource Development
- 4-0 Others

**Location:**

- Province
- Kabupaten
- Kota
- District(Kecamatan)
- Village

<b>Province</b>	West Papua
<b>Kabupaten</b>	Sorong, Raja Ampat, Manokwari, Teluk Bintuni
<b>Kota</b>	Sorong
<b>District (Kecamatan)</b>	
<b>Village</b>	

**Plan, methods and mechanism of the implementation:**

**Planning:**

- IHPCP support is based on a collaborative planning process with key stakeholders. This process identifies key priorities, develops agreed strategies for responses and makes a commitment to building integrated, multisectoral responses.

**Methods and mechanism of the implementation:**

- Close collaboration with local government, in particular KPAP and KPAD.
- Strategic partnership with non-government counterparts, including churches, community leaders and the local media.



### Lessons learn and progress of the project:

#### Lessons Learned:

- The importance of developing sustainability in the government sector through the provincial and district KPAs (KPAP/KPAD) in particular in strengthening KPAP/KPAD capacity to coordinate HIV responses undertaken by government, donors, community and churches.
- The importance of strengthening the technical and administrative capacity of all partner organizations, including government and NGOs counterparts.
- The need to build an integrated referral and treatment system between sub district, district and provincial health services that could be accessible by the communities.
- The importance of systematic procedures for HIV testing, counseling, care, support and treatment of people living with HIV.
- Identification of need for Papua specific communication approach using local culture and languages.

#### Progress of Project:

- 25 KPADs are established in the Papua and West Papua Provinces.
  - HIV and AID Strategic Plans have been formulated at the provincial and district level with the involvement of multi-sectoral partners. Local governments have co-funded these activities.
  - An increase in the sustainability of referral and treatment services for HIV/AIDS at the Puskesmas level.
  - Development and distribution of culturally appropriate information, education, communication, and audio visual materials.
  - Increased availability of HIV counselor, medical officer and paramedics at the provincial, district and kabupaten/kota level in Papua and West Papua provinces.
  - Care Support and Peer Support Groups have been established to increase efforts in removing stigma/discrimination faced by people living with HIV.



Project Information Sheet

**Expansion of DOTS Projects in Papua Province**

Contributed by Global Fund-Tuberculosis

<p><b>Implementing Partner:</b></p> <p>PPO GF-ATM TB Component Papua (Global Fund TB)</p> <p>Jl. Kesehatan No. 2 Dok II Jayapura Telp (0967) 536818 E-mail: <a href="mailto:dots_tb_papua@yahoo.co.id">dots_tb_papua@yahoo.co.id</a></p>									
<p><b>Funding:</b></p> <p>Plan for 2007 Rp. 11.872.920.000,- (Global Fund TB) Rp. 1.342.609.000,- (Special Autonomy Fund from Papua Province) Rp. 2.366.222.000,- (Special Autonomy fund from regencies and municipalities budget) Rp. 525.689.800,- (National Budget/ Budget Proposals/Daftar Isian Proyek of Papua Province) Rp. 733.490.000,- (Others)</p>	<p><b>Implementing Partners</b></p> <p>Dinas Kesehatan</p>								
<p><b>Project Description:</b></p> <ol style="list-style-type: none"> <li>Standards for TB DOTS Strategy- WHO for TB treatment are implemented.</li> <li>Increase the findings and treatment of TB patient.</li> <li>Program and services for TB DOTS treatment expansion.</li> <li>Improve the quality of TB DOTS program management at all level.</li> <li>Cooperate and build networks between supporting components.</li> </ol>									
<p><b>Working sector:</b></p> <p><input type="checkbox"/> 1-1 Food &amp; Nutrition Intake <input checked="" type="checkbox"/> 1-2 Health <input type="checkbox"/> 1-3 Education <input type="checkbox"/> 1-4 Local Economy <input type="checkbox"/> 1-5 Gender Equality <input type="checkbox"/> 1-6 Basic Infrastructure <input type="checkbox"/> 1-7 Village level Capacity Development <input type="checkbox"/> 2-0 Sustainable Environment management <input type="checkbox"/> 3-0 Vocational Training / Human Resource Development <input type="checkbox"/> 4-0 Other</p>	<p><b>Location:</b></p> <p><input checked="" type="checkbox"/> Province: <input checked="" type="checkbox"/> Kabupaten: <input checked="" type="checkbox"/> Kota: <input checked="" type="checkbox"/> District (Kecamatan): <input type="checkbox"/> Village:</p> <table border="1"> <tr> <td><b>Province</b></td> <td>West Papua</td> </tr> <tr> <td><b>Kabupaten</b></td> <td>Manokwari Fakfak Sorong Sorong Selatan</td> </tr> <tr> <td><b>Kota</b></td> <td>Sorong</td> </tr> <tr> <td><b>District (Kecamatan)</b></td> <td>54 health services and 4 hospitals.</td> </tr> </table>	<b>Province</b>	West Papua	<b>Kabupaten</b>	Manokwari Fakfak Sorong Sorong Selatan	<b>Kota</b>	Sorong	<b>District (Kecamatan)</b>	54 health services and 4 hospitals.
<b>Province</b>	West Papua								
<b>Kabupaten</b>	Manokwari Fakfak Sorong Sorong Selatan								
<b>Kota</b>	Sorong								
<b>District (Kecamatan)</b>	54 health services and 4 hospitals.								



	Village	
<p><b>Plan, methods and mechanism of the implementation:</b></p> <p>a). Strengthening the systems of TBC treatment through:</p> <ol style="list-style-type: none"> <li>1. Training the TB program manager at provincial and regency level, manager from Health Services Units, Community Health Services at regency and district level, village midwives, and hospitals.</li> <li>2. Provide microscopes and laboratory supplies for community health services and hospitals.</li> <li>3. Provide computers, operational vehicle for Dinas Kesehatan at provincial and regency level.</li> <li>4. Monitoring and evaluation of TB prevention programs at national, provincial and regency level, twice in a year.</li> <li>5. Supervision, assistance and facilitation from province to regency, from regency to community health services.</li> <li>6. Encourage hospitals to be involved in TB DOTS program.</li> </ol> <p>b) Partnership with the communities, cadre and private health services</p> <ol style="list-style-type: none"> <li>1. Train TB cadres as Medicine Intake Watch at community health services areas.</li> <li>2. Support the provisions of facilities and TB drugs, and assist private health services (hospitals, clinics) in remote areas.</li> <li>3. Advocacy on TB DOTS to provincial and regency governments.</li> <li>4. Cooperate with NGOs and other potential community elements.</li> </ol>		
<p><b>Lessons learn and progress of the project:</b></p> <ol style="list-style-type: none"> <li>1. Trainings for TB program managers have been conducted at provincial and regency level.</li> <li>2. Trainings on TB DOTS have been conducted for doctors and paramedics from 216 community health services (54%), 13 regional hospitals, 8 army-owned hospitals, and 3 private hospitals in Papua and West Papua.</li> <li>3. Support for microscopic laboratory available at 102 community health services, and 5 regional hospitals.</li> <li>4. Detection and treatment of new cases have been increased at hospitals and community health services in 17 regencies in Papua and Papua Barat.</li> <li>5. Gradual supervision, facilitation and regular monitoring and evaluation have been conducted.</li> <li>6. Collaboration to manage TB-HIV between hospitals in Jayapura, Merauke, Mimika, Nabire, Manokwari, and Sorong have been established. Referrals systems from community health services to the hospitals have been established.</li> <li>7. Services for TB DOTS have been provided at private clinics, army-owned hospitals at all urban areas and some villages at remote areas in Mamberamo, Waropen and Sarmi.</li> <li>8. Trainings for TB cadres at 4 community health services area have been conducted.</li> <li>9. Collaboration with Leprosy Program to socialize TB prevention to the Family Welfare Program (Pendidikan Kesejahteraan Keluarga) at provincial level has been established.</li> <li>10. Governments from seven regencies start to support TB programs (Mappi, Merauke, Boven Digoel, Kota Jayapura, Kabupaten Jayapura, Keerom, Biak, Serui, Nabire, Pegunungan Bintang and Jayawijaya)</li> </ol>		



Project Information Sheet

***Leprosy Control Program,***

**Contributed by Netherlands Leprosy relief**

<p><b>Implementing Agency:</b>                  Dinas Kesehatan Province Papua                  Address: Jl Kesehatan No. 2 Dok II - Jayapura                  Tel/Fax : (0967) 536818                  E-mail : <a href="mailto:nlrpapua@yahoo.com">nlrpapua@yahoo.com</a>  <a href="mailto:arrypongтику@yahoo.com">arrypongтику@yahoo.com</a></p>	<p><b>Project Duration:</b>                  From :1995                  To :2010</p>				
<p><b>Funding:</b></p> <p>In 2005: Rp.792.487.750,00                  In 2006: Rp. 803,477,200,00                  In 2007: Rp.1.258.015.900                  In 2008 : Rp 1.260.000.000</p>	<p><b>Implementing Partners:</b></p> <p>Dinas Kesehatan Province Papua                  (This project covers Papua and West Papua Province)</p>				
<p><b>Project Description:</b></p> <ul style="list-style-type: none"> <li>a) The project has been started since 1990s, will end in 2010</li> <li>b) Early case detection and treatment of leprosy cases ,the health center is a basis</li> <li>c) Cut transmission of the disease in community and reduce disability</li> <li>d) Training doctors and nurse as well as laboratory technicians</li> <li>e) Quarterly meeting in districts together with TB program and improve recording and reporting system.</li> <li>f) Supervision and on the job training to districts and health centers</li> <li>g) Reduce stigma and increase people awareness about leprosy</li> <li>h) Community Based approaches (Rapid Village Survey), Self care Group</li> <li>i) Improve rehabilitation including social economic rehabilitation for those people who are affected by leprosy</li> <li>j) Encourage partnership in reaching the leprosy cases</li> </ul>					
<p><b>Working sector:</b></p> <ul style="list-style-type: none"> <li><input type="checkbox"/> 1-1 Food &amp; Nutrition Intake</li> <li><input checked="" type="checkbox"/> 1-2 Health (Leprosy)</li> <li><input type="checkbox"/> 1-3 Education</li> <li><input type="checkbox"/> 1-4 Local Economy</li> <li><input type="checkbox"/> 1-5 Gender Equality</li> <li><input type="checkbox"/> 1-6 Basic Infrastructure</li> <li><input type="checkbox"/> 1-7 Village level Capacity Development</li> <li><input type="checkbox"/> 2-0 Sustainable Environment management</li> <li><input type="checkbox"/> 3-0 Vocational Training / Human Resource Development</li> <li><input type="checkbox"/> 4-0 Other</li> </ul>	<p><b>Location:</b></p> <ul style="list-style-type: none"> <li><input type="checkbox"/> Province</li> <li><input checked="" type="checkbox"/> Kabupaten</li> <li><input checked="" type="checkbox"/> Kota</li> <li><input type="checkbox"/> District(Kecamatan)</li> <li><input type="checkbox"/> Village</li> </ul> <table border="1" data-bbox="842 1760 1313 2020"> <tr> <td><b>Province</b></td> <td>West Papua</td> </tr> <tr> <td><b>Kabupaten</b></td> <td>Fakfak, Manokwari, Sorong, Sorong Selatan, Teluk Bintuni, Teluk Wondama, Kaimana, Raja</td> </tr> </table>	<b>Province</b>	West Papua	<b>Kabupaten</b>	Fakfak, Manokwari, Sorong, Sorong Selatan, Teluk Bintuni, Teluk Wondama, Kaimana, Raja
<b>Province</b>	West Papua				
<b>Kabupaten</b>	Fakfak, Manokwari, Sorong, Sorong Selatan, Teluk Bintuni, Teluk Wondama, Kaimana, Raja				



	Ampat
<b>Kota</b>	Sorong
<b>District (Kecamatan)</b>	
<b>Village</b>	

**Plan, methods and mechanism of the implementation:**

- a) Funds supported by NLR (Netherlands Leprosy Relief), and increase local government commitment for sustainability.
- b) Implemented by province, districts, health centers and hospitals.
- c) Drugs available and free of charge.
- d) Follow national guideline.
- e) Monitoring and evaluation based on quarterly meeting, supervision and reports.
- f) Combined Leprosy, Yaws and TB program.

**Lessons learn and progress of the project**

Papua and Papua Barat are big provinces with total population about 2,675,620. This province consists of 20 districts in Papua and 9 districts belong to Papua Barat. Overall, the performance of leprosy control program as follows: CDR (Case Detection Rate) 54.1/100,000 or there were 1447 new cases annually, PR (Prevalence Rate) at the end of 2006 was 6.4/10,000 (target below 1/10,000 population); Child Rate 26.7%, and Completion of treatment for PB (*Pausi Bacillary*) was 71.3% and for MB (*Multi Bacillary*) was 66.5%. The CDR in 2006 has significantly increased, compared to the CDR in 2005 (39.3/100,000) due to intensifying program /impact of trainings and active case findings. High prevalence of leprosy in Papua shows the burden of this disease and high Child rate assumes that transmission of the disease on going.

**Other developments and new initiatives**

**a. Improving program management through 5 WASOR PLUS assistance**

As a follow up of TOT for wasor, we have developed a Wasor plus initiative with the main objective is to assist wasor (district supervisor) from new born districts by regularly on the job training by the senior wasor that we called it "Wasor plus".

**b. Home visits for those patients who have severe reactions and extra fooding.**

**c. Dialogue between leprosy patients and Bupati Jayapura and declaration for movement to detect new cases**

**d. Self Care Group (SCG).**

In 2006, 3 SCGs were developed, namely 1 SCG in Nabire, and 2 SCGs in Sorong Municipality (Selebe Solu Hospital and Settlement in Km10)





"I get worse of my hands because I have to work"

Self care, occupational training and economic rehabilitation needed

**e. Training TOT for Poli Teknik Kesehatan (Poltekes)**

**f. Partnership with Nations Petroleum Oil and Gas Company**

Partnership with this business company, have been involving NLR and provincial and local government in acceleration of elimination /eradication of contagious diseases in Block Rombebai (Sarmi and Waropen). This activity is a pilot for learning of collaboration with company, reaching remote areas and integrated programs including empowering health centers and districts and community development. From 5 villages, which close to the location of exploration, it has been, detected 51 new leprosy cases and some cases need for care and rehabilitations.




Project Information Sheet

***Life Skills and Peer Education for HIV and AIDS prevention and care among young people in Papua***

<p><b>Implementing Agency:</b></p> <p>UNICEF Indonesia</p>	
<p><b>Funding:</b></p> <p>USD 3.900.000,00 (phase II)</p> <p>Government of Netherlands</p>	<p><b>Implementing Partners:</b></p> <p>National level: Ministry of Education (MONE), Ministry of Health, National AIDS Commission.</p> <p>Provincial level: Dinas P&amp;P, Dinas Kesehatan, Provincial / District / City AIDS Commission.</p>
<p><b>Project Description:</b></p> <ol style="list-style-type: none"> <li>1. Ensuring that children from all public junior secondary schools in 11 districts / cities (Jayapura town, Jayapura, Jayawijaya, Keerom, Merauke, Mimika, Supiori, Biak, Manokwari, Sorong town, and Sorong) are provided with appropriate knowledge and skills to prevent HIV and AIDS.</li> <li>2. Reaching out of school young people across target districts / cities with knowledge and skills on HIV and AIDS prevention and care.</li> <li>3. Delaying first sexual engagement in early years and changed of unsafe sexual behavior among the youth and the most at risk adolescents.</li> <li>4. Encouraging national and provincial government to replicate the project model using their own budget.</li> </ol> <p>In achieving the aim, several activities were conducted as follows:</p> <ol style="list-style-type: none"> <li>1. Life Skill Education (LSE) or HIV education for teachers and students and peer-to-peer education for out of school through outreach are key strategies for this prevention and care among young people in Papua. Technical assistance to facilitate, develops, and strengthens school clubs managed by students and radio programme managed by Peer Educators were performed.</li> <li>2. In youth community, discussions on reduction of stigma and discrimination associated with HIV in order to enable public action for knowing better about prevention and care of HIV and AIDS and its impact were done. Other activities were in relation to improve gender mainstreaming into health education to enable women to negotiate safer sex, especially for the ones who have little chance of education.</li> <li>3. Prevention of Mother to Child HIV Transmission (PMTCT) intervention is done in collaboration with Health Section UNICEF to increase the capacity of the medical staff (doctors, midwives and nurses) in Community Health Centres (Puskesmas) and district hospitals and referral hospitals.</li> <li>4. Continuous advocacy to provincial and district government decision makers were also performed to ensure the replicating of the program in other regions.</li> </ol>	



<p><b>Working sector:</b></p> <p><input type="checkbox"/> 1-1 Food &amp; Nutrition Intake</p> <p><input checked="" type="checkbox"/> 1-2 Health (HIV/AIDS)</p> <p><input type="checkbox"/> 1-3 Education</p> <p><input type="checkbox"/> 1-4 Local Economy</p> <p><input type="checkbox"/> 1-5 Gender Equality</p> <p><input type="checkbox"/> 1-6 Basic Infrastructure</p> <p><input type="checkbox"/> 1-7 Village level Capacity Development</p> <p><input type="checkbox"/> 2-0 Sustainable Environment management</p> <p><input type="checkbox"/> 3-0 Vocational Training / Human Resource Development</p> <p><input type="checkbox"/> 4-0 Other</p>	<p><b>Location:</b></p> <p><input checked="" type="checkbox"/> Province</p> <p><input checked="" type="checkbox"/> Kabupaten</p> <p><input checked="" type="checkbox"/> Kota</p> <p><input type="checkbox"/> District (Kecamatan)</p> <p><input type="checkbox"/> Village</p> <table border="1" style="width: 100%; border-collapse: collapse; margin-top: 10px;"> <tr> <td style="width: 20%;"><b>Province</b></td> <td>West Papua</td> </tr> <tr> <td><b>Kabupaten</b></td> <td>Sorong, Manokwari</td> </tr> <tr> <td><b>Kota</b></td> <td>Sorong</td> </tr> <tr> <td><b>District/ Kecamatan</b></td> <td></td> </tr> <tr> <td><b>Village</b></td> <td></td> </tr> </table>	<b>Province</b>	West Papua	<b>Kabupaten</b>	Sorong, Manokwari	<b>Kota</b>	Sorong	<b>District/ Kecamatan</b>		<b>Village</b>	
<b>Province</b>	West Papua										
<b>Kabupaten</b>	Sorong, Manokwari										
<b>Kota</b>	Sorong										
<b>District/ Kecamatan</b>											
<b>Village</b>											
<p><b>Plan, methods and mechanism of the implementation:</b></p> <p>In implementing the program, UNICEF works closely with government at provincial and district level namely Planning Board (Bappeda), Education Department, Health Department and AIDS Commission.</p> <p>Several activities namely workshop and training for capacity building, advocacy, monitoring and evaluation, production of IEC material and technical assistance were conducted to achieve the aim of the program.</p>											
<p><b>Lessons learn and progress of the project:</b></p> <ol style="list-style-type: none"> <li>1. The project is being implemented in an environment where there is great diversity of the population, geographic reach, and spread of the programme. This is coupled with insufficient capacity available at the district and sub-district level in the competence areas required for successful implementation of the project.</li> </ol> <div style="display: flex; align-items: flex-start; margin-top: 10px;"> <div style="flex: 1;">  </div> <div style="flex: 2; padding-left: 10px;"> <ol style="list-style-type: none"> <li>2. Decentralization of the education system in Papua implies the need to advocate to the principal of each school for HIV interventions to be implemented. This process was time consuming.</li> <li>3. Discussions with government, NGOs, FBOs and UN partners show opportunities and willingness to link HIV prevention with health services for young people. This includes making the Puskesmas (health centres) youth friendly by establishing opening hours that are convenient to young people, and involving young people to help the staff, and to do peer-education activities at the clinic.</li> <li>4. Potential prospective collaborative efforts with other partners to develop more innovative means to disseminate information and education of HIV/AIDS prevention among youth in line with the principles of continuum of care in HIV and AIDS which will be contributed by stakeholders.</li> </ol> </div> </div>											



Training of Trainers for Peer Education Facilitators in Manokwari, Papua Barat



Training of PE for Radio Broadcasting for Jayapura District and Jayawijaya District in Sentani, Javanura, Papua



# BP3D WEST PAPUA PROVINCE

## Harmonisation of Support to Human Development Programmes



### Project Information Sheet

### ***Malaria Program in Eastern Indonesia***

<b>Implementing Agency:</b>  UNICEF Kantor Dinas Otonom Pemda Papua, Gedung A Lantai III Blok C-Vim Kotaraja Jayapura-Papua Telp. (0967) 582488, 585301 Fax. (0967) 586588	<b>Project Duration:</b>  From : 2005 To : 2008										
<b>Funding:</b>  The total budget for the Malaria Program is US\$ 2,189,879 for over 2005-2008.  USAID, GFATM	<b>Implementing Partners:</b>  Ministry of Health										
<b>Project Description:</b>  The core goal of the Malaria program is to work with the Indonesian Ministry of Health (MOH) and other partners to build a sustainable system to deliver malaria diagnosis, treatment, and prevention from mosquito bite by using insecticide treated net through routine antenatal care to pregnant women living in 3 kabupaten in Tanah Papua (Kabupaten Jayapura, Sorong and Manokwari). To demonstrate that the system is logical, workable, and effective, and extend it to other malaria-endemic districts in Papua. The long-term impact of such a system will be a reduced burden of malaria in pregnancy and improved maternal and child health.											
<b>Working sector:</b>  <input type="checkbox"/> 1-1 Food & Nutrition Intake <input checked="" type="checkbox"/> 1-2 Health <input type="checkbox"/> 1-3 Education <input type="checkbox"/> 1-4 Local Economy <input type="checkbox"/> 1-5 Gender Equality <input type="checkbox"/> 1-6 Basic Infrastructure <input type="checkbox"/> 1-7 Village level Capacity Development <input type="checkbox"/> 2-0 Sustainable Environment management <input type="checkbox"/> 3-0 Vocational Training / Human Resource Development <input type="checkbox"/> 4-0 Other	<b>Location:</b>  <input checked="" type="checkbox"/> Province <input checked="" type="checkbox"/> Kabupaten <input type="checkbox"/> Kota <input checked="" type="checkbox"/> District(Kecamatan) <input checked="" type="checkbox"/> Village  <table border="1" data-bbox="842 1641 1257 1883"> <tr> <td><b>Province</b></td> <td>West Papua</td> </tr> <tr> <td><b>Kabupaten</b></td> <td>Sorong, Manokwari</td> </tr> <tr> <td><b>Kota</b></td> <td>-</td> </tr> <tr> <td><b>District/ Kecamatan</b></td> <td>All districts</td> </tr> <tr> <td><b>Village</b></td> <td>All villages</td> </tr> </table>	<b>Province</b>	West Papua	<b>Kabupaten</b>	Sorong, Manokwari	<b>Kota</b>	-	<b>District/ Kecamatan</b>	All districts	<b>Village</b>	All villages
<b>Province</b>	West Papua										
<b>Kabupaten</b>	Sorong, Manokwari										
<b>Kota</b>	-										
<b>District/ Kecamatan</b>	All districts										
<b>Village</b>	All villages										
<b>Plan, methods and mechanism of the implementation:</b> Under Malaria program, UNICEF develops a strong relationship with the MOH, encouraging cooperation within different departments of the MOH, building partnerships with technical and implementing organisations, and raising funds.											



**Lessons learn and progress of the project:**

In its first year, the Malaria Program programme has made

excellent progress in forging the needed alliances and leveraging additional funding to realize this broad goal, though actual delivery of services to communities is only just beginning.

o Significant progress has also been made in assisting the MOH in developing a sound, balanced malaria control program. Besides, the first stage of training for MOH staff, collection a baseline survey data from Kabupaten Jayapura and Kabupaten Sorong, the ordering and placement of materials for diagnosis and prevention at district level in each of our target districts, social mobilization, and developing of educational materials with input from P2B2 and Kesehatan Keluarga (KesGa) have been implemented.

- o 23.000 of mosquito's bed nets distributed to pregnant mothers.
- o One ToT on malaria prevention to pregnant mothers is conducted in provincial level and 38 trainings conducted in sub-district level.





Project Information Sheet

**Women and Children Health Programme in Papua**

<b>Implementing Agency:</b>	
UNICEF Kantor Dinas Otonom Ged. A, Lantai 3 Vim, Kotaraja, Papua, Indonesia	
<b>Funding:</b>	<b>Implementing Partners:</b>
AusAid USD 30.1 million (2006 - 2011)	Dinas Kesehatan Province Papua/Papua Barat and Dinas Kesehatan Kabupaten Jayawijaya, Jayapura, Manokwari and Sorong

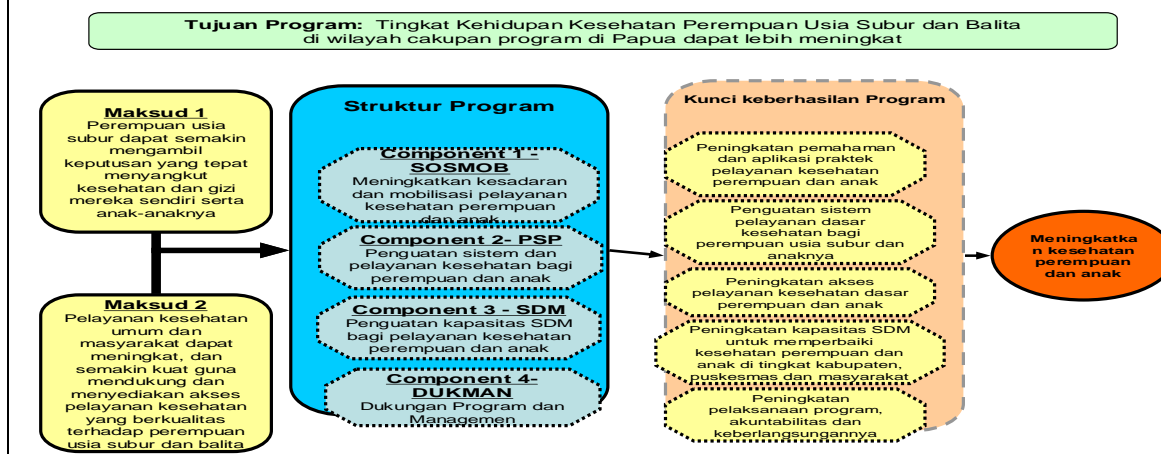
**Project Description:**

Women and children health programme covers: Improvement of maternal and child health care quality, Malaria prevention on pregnant women, Children protection of disease through immunization, pre-pregnancy package for female teenagers and Efforts to improve child and family nutrition.

By the women and children health programme in Papua, it is expected that women of reproductive age and children under 5 years old will have their health and nutrition status improved and have healthier condition of their environment.

There are 4 main components in women and children health programme, among others are; (1) improving community awareness, especially in adopting healthy life practice, (2) strengthening health care system in decentralization era to improve access and quality of health care, (3) improving health staff quality in providing and managing qualified health care and (4) providing and supporting programme management for the continuum effort of the programme itself.

It is shown briefly from the diagram below:





<p><b>Working sector:</b></p> <ul style="list-style-type: none"> <li><input type="checkbox"/> 1-1 Food &amp; Nutrition Intake</li> <li><input checked="" type="checkbox"/> 1-2 Health</li> <li><input type="checkbox"/> 1-3 Education</li> <li><input type="checkbox"/> 1-4 Local Economy</li> <li><input type="checkbox"/> 1-5 Gender Equality</li> <li><input type="checkbox"/> 1-6 Basic Infrastructure</li> <li><input type="checkbox"/> 1-7 Village level Capacity Development</li> <li><input type="checkbox"/> 2-0 Sustainable Environment management</li> <li><input type="checkbox"/> 3-0 Vocational Training / Human Resource Development</li> <li><input type="checkbox"/> 4-0 Other</li> </ul>	<p><b>Location:</b></p> <ul style="list-style-type: none"> <li><input type="checkbox"/> Province</li> <li><input type="checkbox"/> Kabupaten</li> <li><input type="checkbox"/> Kota</li> <li><input type="checkbox"/> District(Kecamatan)</li> <li><input type="checkbox"/> Village</li> </ul> <table border="1" style="width: 100%; border-collapse: collapse; margin-top: 10px;"> <tr> <td style="width: 30%;"><b>Province</b></td> <td>West Papua</td> </tr> <tr> <td><b>Kabupaten</b></td> <td>Manokwari and Sorong</td> </tr> <tr> <td><b>Kota</b></td> <td></td> </tr> <tr> <td><b>District (Kecamatan)</b></td> <td></td> </tr> <tr> <td><b>Village</b></td> <td></td> </tr> </table>	<b>Province</b>	West Papua	<b>Kabupaten</b>	Manokwari and Sorong	<b>Kota</b>		<b>District (Kecamatan)</b>		<b>Village</b>	
<b>Province</b>	West Papua										
<b>Kabupaten</b>	Manokwari and Sorong										
<b>Kota</b>											
<b>District (Kecamatan)</b>											
<b>Village</b>											

**Plan, methods and mechanism of the implementation:**

**Component 1.**



Activities of this component purpose to improve community participation in the efforts of improving maternal and child health in their areas. The activities done were among others: conducting carnival and campaign about the importance of maternal and child health, posyandu, carnival and socialization about the importance of using BUKU KIA (maternal and child health book) at activities done in Posyandu.

The two pictures, above and beside, showed activities in carnival and posyandu conducted in Depapre Kab. Jayapura in 2005 and Wamena Jayawijaya in 2007.

**Component 2:**

Component 2 activities were among others:

- Strengthening DTSP or maternal and child health problem solving-based planning team in kabupaten level,
- Micro planning activity in puskesmas,
- Bidan/midwife supervision in village and puskesmas, referral system including use of medical radio in polindes till referral hospital,
- Audit Maternal and Perinatal,
- Immunization, MNTE, vaccine and cold chain
- Strengthening recording and reporting system,
- Survey and study to have more significant evident about existing and improved efforts like malaria survey and iodium salt.





### Component 3 :

One important key for the success of women and children health programme is the availability of health staff especially Bidan/ midwife and doctor in health service centres like Puskesmas. However, geographical problems, scattered and remote population in Papua and Papua Barat Provinces become a big challenge too. One best but difficult strategy is to make service closer to community so that the accesses of service are more improved.



It should be taken into account the importance of improving health staff skills (skill based training; like APN, Life Saving Skill, Newborn Care, MTBS etc.) and their ability to manage programme (management training; supportive supervision, logistic bidan, reporting and recording etc. ). The picture on the right is an example of component 3 activity.

### Component 4.

Component 4 activities are supporting activities that are also important to guarantee the programme sustainability in the future. As we know, foreign assistance as performed by UNICEF will not last forever. One day, the local government and Papuans will stand alone and be able to manage the effort to improve their maternal and child health. To achieve that, some efforts need to be done, among others are:

- a. Strengthening KHPPIA team
- b. Technical assistance team for strengthening planning and programme (TAC Team)
- c. Developing phasing out strategy

### Lessons learn and progress of the project:

Some achievements of the maternal and child health programme in Papua and Papua Barat Provinces among others are:

1. Community awareness on the importance of their participation in every health effort get improved, such as improving of number of women who get help from trained health staff in delivery time in kabupaten Jayapura and increasing of awareness to develop cooperation between dukun/pregnant woman family and midwives, increasing of ante natal care visit.
2. The more budget allocated in local government budget (APBD) for health cost in replicating the activity between PEMDA – UNICEF for district (kecamatan) that is not focus on maternal and child health programme.

# BP3D WEST PAPUA PROVINCE

## Harmonisation of Support to Human Development Programmes



### Project Information Sheet

### **Basic Human Services – HIV/AIDS**

Contributed by USAID

<b>Implementing Partner:</b>  Family Health International Dr. Robert Magnani Telp : 62-21-422-3463 Fax ; 62-21-422-3455 Hp : 0811-920-513 E-mail : magnani@fhi.or.id					
<b>Funding:</b>  Regional funding levels are not available	<b>Implementing Partners:</b>  Provincial and district health offices, provincial and district AIDS Commissions				
<b>Project Description:</b>  <p>Aksi Stop AIDS (ASA): Within the past decade, Indonesia has witnessed a dramatic increase in the prevalence of HIV/AIDS. The window of opportunity to prevent the exponential spread of HIV into the general population, with disastrous consequences, is fast closing. USAID is assisting the government of Indonesia to address the spread of HIV among most-at-risk-groups, including commercial sex workers and their clients; injecting drug users; men who have sex with men; and the general population of Papua, where the epidemic is emerging rapidly. The program aims to: (1) increase coverage and use of risk reduction behaviors, practices and services; (2) improve the capacity of partner agencies to self-assess and enhance their performance; and (3) strengthen institutional responses from the AIDS Commissions (at all levels), clinics, the prison system, and the uniformed services.</p> <p>ASA is a three-year program (2005-2008), being implemented by Family Health International (FHI), which works in seven provinces, including DKI/Jakarta West Java, East Java, Central Java, Papua, Riau Islands, and North Sumatra. In these seven provinces, ASA works in 78 of the total 100 districts identified by the Government of Indonesia as being priority areas. This program is implemented in partnership with British Petroleum through a multi-year public-private alliance.</p>					
<b>Working sector:</b>  <input type="checkbox"/> 1-1 Food & Nutrition Intake <input checked="" type="checkbox"/> 1-2 Health <input type="checkbox"/> 1-3 Education <input type="checkbox"/> 1-4 Local Economy <input type="checkbox"/> 1-5 Gender Equality <input type="checkbox"/> 1-6 Basic Infrastructure <input type="checkbox"/> 1-7 Village level Capacity Development <input type="checkbox"/> 2-0 Sustainable Environment management	<b>Location:</b>  <input type="checkbox"/> Province <input checked="" type="checkbox"/> Kabupaten <input checked="" type="checkbox"/> Kota <input type="checkbox"/> District (Kecamatan) <input type="checkbox"/> Village/Desa  <table border="1"> <tr> <td><b>Province</b></td> <td>West Papua</td> </tr> <tr> <td><b>Kabupaten</b></td> <td>Manokwari, Fak-fak, Kaimana, Teluk</td> </tr> </table>	<b>Province</b>	West Papua	<b>Kabupaten</b>	Manokwari, Fak-fak, Kaimana, Teluk
<b>Province</b>	West Papua				
<b>Kabupaten</b>	Manokwari, Fak-fak, Kaimana, Teluk				

# BP3D WEST PAPUA PROVINCE

## Harmonisation of Support to Human Development Programmes



<input type="checkbox"/> 3-0 Vocational Training / Human Resource Development <input type="checkbox"/> 4-0 Other		Bintuni, Sorong
	<b>Kota</b>	Sorong
	<b>District (Kecamatan)</b>	
	<b>Villages</b>	
<b>Plan, methods and mechanism of the implementation:</b>  Technical Assistance, training and commodities		
<b>Lessons learn and progress of the project:</b>  New program. An evaluation will be conducted in the near future.		

# BP3D WEST PAPUA PROVINCE

## Harmonisation of Support to Human Development Programmes



### Project Information Sheet

### **Basic Human Services - Tuberculosis**

Contributed by USAID

<b>Implementing Partner:</b>  Royal Netherlands Tuberculosis Society (KNCV) Contact: Benson Hausman Phone: 62-21-428-84176 Fax: 62-21-428-84178 HP: 0813-109-077104 Email: hausmanb@kncvtbc.nl											
<b>Funding:</b>  Regional funding levels are not available	<b>Implementing Partners:</b>  Provincial and district health offices; public health centers, public Hospitals, and Provincial and district labs.										
<b>Project Description:</b>  Indonesia has the third highest tuberculosis (TB) burden in the world. It is estimated that approximately 100,000 Indonesians die from TB each year. USAID provides technical and operational assistance to strengthen and expand DOTS (Directly Observed Treatment Short-Course) coverage in Indonesia through the TB Coalition Technical Assistance (TBCTA) program, implemented by the Royal Netherlands TB Association (KNCV). TBCTA is supporting the National TB Program in nine provinces, covering approximately 62% of the total Indonesian population. TBCTA supports the National TB Program to improve program management; laboratory diagnosis of TB; treatment for TB patients; training for provincial, district and sub-district the National TB Program staff; management of TB drugs; local government commitment; and research. With support from TBCTA and others, Indonesia has made remarkable progress, increasing the detection of TB patients (Case Detection Rate) from 28% in 2001 to 52% in 2004, increasing the cure rate from 67% in 2001 to 85% in 2004, and reducing the overall burden of TB in Indonesia. The period of performance for this project is 2006 to 2010. This program is implemented in partnership with British Petroleum through a multi-year public-private alliance.											
<b>Working sector:</b>  <input type="checkbox"/> 1-1 Food & Nutrition Intake <input checked="" type="checkbox"/> 1-2 Health <input type="checkbox"/> 1-3 Education <input type="checkbox"/> 1-4 Local Economy <input type="checkbox"/> 1-5 Gender Equality <input type="checkbox"/> 1-6 Basic Infrastructure <input type="checkbox"/> 1-7 Village level Capacity Development <input type="checkbox"/> 2-0 Sustainable Environment management <input type="checkbox"/> 3-0 Vocational Training / Human Resource Development <input type="checkbox"/> 4-0 Other	<b>Location:</b>  <input type="checkbox"/> Province: <input checked="" type="checkbox"/> Kabupaten: <input type="checkbox"/> Kota: <input type="checkbox"/> District(Kecamatan): <input type="checkbox"/> Village/Desa:  <table border="1"> <tr> <td><b>Province</b></td> <td>West Papua</td> </tr> <tr> <td><b>Kabupaten</b></td> <td>Sorong, Manokwari</td> </tr> <tr> <td><b>Kota</b></td> <td></td> </tr> <tr> <td><b>District</b></td> <td></td> </tr> <tr> <td><b>Village</b></td> <td></td> </tr> </table>	<b>Province</b>	West Papua	<b>Kabupaten</b>	Sorong, Manokwari	<b>Kota</b>		<b>District</b>		<b>Village</b>	
<b>Province</b>	West Papua										
<b>Kabupaten</b>	Sorong, Manokwari										
<b>Kota</b>											
<b>District</b>											
<b>Village</b>											



**Plan, methods and mechanism of the implementation:**

Technical assistance, training, and commodities

**Lessons learn and progress of the project:**

New program.



Project Information Sheet

**Basic Human Services - Malaria**

Contributed by USAID

<p><b>Implementing Partner</b></p> <p>UNICEF                  Dr. David Hipgrave                  Phone: 62-21-570-5816                  Fax: 62-21-571-1326                  HP: 0811-979-016                  Email: dhipgrave@unicef.org</p>											
<p><b>Funding</b></p> <p>Regional funding levels are not available</p>	<p><b>Implementing Partners</b></p> <p>Provincial and district health offices;                  Provincial and district labs; and Indonesia                  Midwives Associations (IBI)</p>										
<p><b>Project Description</b></p> <p>USAID supports a three year program (2005-2008) to address malaria in pregnancy by improving health services, systems and behaviors that contribute to a reduction of malaria in pregnancy in selected districts in Papua. In Papua, the program covers Sorong, Jayapura and Biak districts. The program ensures the integration of malaria control and maternal health systems development and quality control; provides and distributes insecticide treated bed nets (ITNs) for pregnant women and young children; and provides technical assistance for increasing awareness and understanding of malaria in pregnancy, including strengthening antenatal care to ensure both quality diagnosis and treatment of malaria. This program is implemented in partnership with British Petroleum through a multi-year public-private alliance.</p>											
<p><b>Working sector:</b></p> <p><input type="checkbox"/> 1-1 Food &amp; Nutrition Intake  <input checked="" type="checkbox"/> 1-2 Health  <input type="checkbox"/> 1-3 Education  <input type="checkbox"/> 1-4 Local Economy  <input type="checkbox"/> 1-5 Gender Equality  <input type="checkbox"/> 1-6 Basic Infrastructure  <input type="checkbox"/> 1-7 Village level Capacity Development  <input type="checkbox"/> 2-0 Sustainable Environment management  <input type="checkbox"/> 3-0 Vocational Training / Human Resource Development  <input type="checkbox"/> 4-0 Other</p>	<p><b>Location:</b></p> <p><input type="checkbox"/> Province  <input checked="" type="checkbox"/> Kabupaten  <input type="checkbox"/> Kota  <input type="checkbox"/> District (Kecamatan)  <input type="checkbox"/> Village</p> <table border="1"> <tr> <td><b>Province</b></td> <td>West Papua</td> </tr> <tr> <td><b>Kabupaten</b></td> <td>Sorong, Manokwari</td> </tr> <tr> <td><b>Kota</b></td> <td></td> </tr> <tr> <td><b>District (Kecamatan)</b></td> <td></td> </tr> <tr> <td><b>Village</b></td> <td></td> </tr> </table>	<b>Province</b>	West Papua	<b>Kabupaten</b>	Sorong, Manokwari	<b>Kota</b>		<b>District (Kecamatan)</b>		<b>Village</b>	
<b>Province</b>	West Papua										
<b>Kabupaten</b>	Sorong, Manokwari										
<b>Kota</b>											
<b>District (Kecamatan)</b>											
<b>Village</b>											



**Plan, methods and mechanism of the implementation:**

Technical assistance, training, and commodities.

**Lessons learn and progress of the project:**

New program. An evaluation will be conducted in the near future.

# BP3D WEST PAPUA PROVINCE

## Harmonisation of Support to Human Development Programmes



### Project Information Sheet

### **Support for Papua and West Papua Province**

Contributed by WHO

<p><b>Implementing Agency:</b></p> <p>Dinas kesehatan provinsi Papua          Jl. Abe – Kotaraja          Tlp. : 0967 588024          Fax. : 0967 588024          Email : irawan_chs@yahoo.com</p>	<p><b>Project Duration:</b></p> <p>From :          To : Long term/multi years</p>										
<p><b>Funding:</b></p> <p>WHO for piloting and budget for National consultant, local government and international donor (FHI) for replication of the activities.</p>	<p><b>Implementing Partners:</b></p> <p>Papua provincial health office          Regencies health office.          Health centers</p>										
<p><b>Project Description:</b></p> <ol style="list-style-type: none"> <li>1. Technical support to Provincial Health Office to control HIV/AIDS and TB, Leprosy and Yaws, including locally endemic diseases for Papua and Papua Barat.</li> <li>2. Technical support to Provincial Health Office and District Health Office to conduct MCH program in Papua especially related to Maternity Waiting Home program development.</li> <li>3. Supporting Immunisation activities/program trough providing cold chain and technical support (Joint program WHO Jakarta and Ministry of Health).</li> <li>4. To support decentralized HIV/AIDS services (including IMAAI and VCT) in the Health Center level. Replicate to 54 Health Centers within 15 regencies.</li> <li>5. To support clinical monitoring HIV/AIDS program in Hospitals and Health Centers.</li> <li>6. To introduce and piloting TB-HIV collaboration in Papua province including 5 regencies and 1 municipality in relation :             <ul style="list-style-type: none"> <li>- To develop TB-HIV/AIDS program collaboration mechanism.</li> <li>- To decrease TB burden within HIV/AIDS patients</li> <li>- To decrease HIV burden within TB patients.</li> </ul> </li> </ol>											
<p><b>Working sector:</b></p> <ul style="list-style-type: none"> <li><input type="checkbox"/> 1-1 Food &amp; Nutrition Intake</li> <li><input checked="" type="checkbox"/> 1-2 Health (HIV/AIDS and Others )</li> <li><input type="checkbox"/> 1-3 Education</li> <li><input type="checkbox"/> 1-4 Local Economy</li> <li><input type="checkbox"/> 1-5 Gender Equality</li> <li><input type="checkbox"/> 1-6 Basic Infrastructure</li> <li><input type="checkbox"/> 1-7 Village level Capacity Development</li> <li><input type="checkbox"/> 2-0 Sustainable Environment management</li> <li><input type="checkbox"/> 3-0 Vocational Training / Human Resource Development</li> <li><input type="checkbox"/> 4-0 Other</li> </ul>	<p><b>Location:</b></p> <ul style="list-style-type: none"> <li><input checked="" type="checkbox"/> Province</li> <li><input checked="" type="checkbox"/> Kabupaten</li> <li><input checked="" type="checkbox"/> Kota</li> <li><input checked="" type="checkbox"/> District(Kecamatan)</li> <li><input type="checkbox"/> Village</li> </ul> <table border="1" data-bbox="847 1798 1315 2011"> <tr> <td><b>Province</b></td> <td>Papua and West Papua</td> </tr> <tr> <td><b>Kabupaten</b></td> <td>15 Kabupaten</td> </tr> <tr> <td><b>Kota</b></td> <td>2 kota</td> </tr> <tr> <td><b>District</b></td> <td>54 districts.</td> </tr> <tr> <td><b>Village</b></td> <td></td> </tr> </table>	<b>Province</b>	Papua and West Papua	<b>Kabupaten</b>	15 Kabupaten	<b>Kota</b>	2 kota	<b>District</b>	54 districts.	<b>Village</b>	
<b>Province</b>	Papua and West Papua										
<b>Kabupaten</b>	15 Kabupaten										
<b>Kota</b>	2 kota										
<b>District</b>	54 districts.										
<b>Village</b>											



### **Plan, methods and mechanism of the implementation:**

1. Introducing
2. Piloting
3. Replication, work together with other international donors (FHI) and Provincial Local Government (provincial health office) and District Health Office.
4. Placement four National Consultant in Papua province to assist province, regencies and health center to develop and conduct program.

### **Lessons learn and progress of the project:**

With the replication of IMAAI and VCT for HIV/AIDS to 54 health centers within 15 regencies, clearly more suspect detected and get treatment that means to decrease virus transformation probabilities from person to the others.

With the assessment of the entire pregnant mother will known that several mothers having problems when they labor/delivery that to easier to plan referral and to increase safety of the mothers and their babies.

The availability of the National Consultant in the field very useful to integrate program within local government and international agencies.



Project Information Sheet

***Literacy Program***

Contributed by SIL

<p><b>Implementing Partner</b></p> <p>SIL International                  P.O. Box 1 Sentani 99352, Jayapura - Papua                  Phone: (0967) 593 971                  Fax : (0967) 593 974                  Email: <a href="mailto:mike_eastwood@sil.org">mike_eastwood@sil.org</a>                  Director – Mike Eastwood</p>	
<p><b>Funding</b></p> <p>Special Autonomy fund                  Government fund                  Oikonomos Foundation                  CIDA                  UNDP                  Private funds for several projects.                  Facilities from BPMD</p>	<p><b>Implementing Partners</b></p> <p>Ministry of National Education                  Teaching and Learning Department                  Papua Province – Nonformal Education                  Division                  Village Community Empowerment Agency                  Social Welfare Department                  Yayasan Pengembangan Masyarakat                  Edopi</p>
<p><b>Project Description</b></p> <p>The goal of the Literacy Program is to eradicate illiteracy and to keep the continuance of local languages and cultures. Expectantly, literacy will give opportunities and motivations to the communities to develop their living and their communities.</p> <p>The Literacy Program supports the literacy activities in more than ten language or indigenous groups (e.g. Walak, Isirawa, Kemtuik, Ketengban, Edopi, Bauzi, Ambai, Yale, Maibrat, Mpur, Tehit, Kirikiri, Korowai, and Iau). Some of the literacy activities are:</p> <ul style="list-style-type: none"> <li>• Reading and writing for adults</li> <li>• Development of alphabet curricula</li> <li>• Development of local content for primary school</li> <li>• Revising and developing elementary school textbooks in both local language and Bahasa.</li> <li>• Development of tone alphabet books</li> <li>• Development of basic counting books</li> <li>• Development of illustrated dictionaries</li> <li>• Development of health information books</li> <li>• Development of appropriate technology books.</li> <li>• Training for teachers and tutors</li> <li>• Training for local volunteers/cadres.</li> <li>• Training on translation local languages to Bahasa or vice versa.</li> </ul>	



<p><b>Working sector:</b></p> <p><input type="checkbox"/> 1-1 Food &amp; Nutrition Intake</p> <p><input type="checkbox"/> 1-2 Health</p> <p><input checked="" type="checkbox"/> 1-3 Education</p> <p><input type="checkbox"/> 1-4 Local Economy</p> <p><input type="checkbox"/> 1-5 Gender Equality</p> <p><input type="checkbox"/> 1-6 Basic Infrastructure</p> <p><input type="checkbox"/> 1-7 Village level Capacity Development</p> <p><input type="checkbox"/> 2-0 Sustainable Environment management</p> <p><input type="checkbox"/> 3-0 Vocational Training / Human Resource Development</p> <p><input type="checkbox"/> 4-0 Other</p>	<p><b>Location:</b></p> <p><input type="checkbox"/> Province</p> <p><input checked="" type="checkbox"/> Kabupaten</p> <p><input type="checkbox"/> Kota</p> <p><input checked="" type="checkbox"/> District (Kecamatan):</p> <p><input checked="" type="checkbox"/> Village</p> <table border="1" style="width: 100%; border-collapse: collapse; margin-top: 10px;"> <tr> <td style="width: 30%;"><b>Province</b></td> <td>West Papua</td> </tr> <tr> <td><b>Kabupaten</b></td> <td>1. Sorong Selatan 2. Manokwari</td> </tr> <tr> <td><b>Kota</b></td> <td></td> </tr> <tr> <td><b>District (Kecamatan)</b></td> <td>Ayamuru, Teminabuan, Kebar</td> </tr> <tr> <td><b>Village</b></td> <td></td> </tr> </table>	<b>Province</b>	West Papua	<b>Kabupaten</b>	1. Sorong Selatan 2. Manokwari	<b>Kota</b>		<b>District (Kecamatan)</b>	Ayamuru, Teminabuan, Kebar	<b>Village</b>	
<b>Province</b>	West Papua										
<b>Kabupaten</b>	1. Sorong Selatan 2. Manokwari										
<b>Kota</b>											
<b>District (Kecamatan)</b>	Ayamuru, Teminabuan, Kebar										
<b>Village</b>											
<p><b>Plan, methods and mechanism of the implementation:</b></p> <ul style="list-style-type: none"> <li>Research on phonology to develop the orthography of local languages.</li> <li>Develop bilingual teaching aid using local languages.</li> <li>Develop bilingual story books using local languages.</li> <li>Write and publish books and illustrated dictionaries in local languages</li> <li>Conduct workshop to develop curricula in local languages</li> <li>Conduct workshop on local languages literatures writing.</li> <li>Conduct trainings for tutors and coordinators of adult literacy programs</li> <li>Establish community libraries.</li> <li>Support the literacy activities conducted by SIL facilitators.</li> <li>Assist tutors and coordinators trough refresher trainings and mentoring, evaluation program</li> <li>Conduct trainings for primary school teachers to socialize the bilingual curricula</li> <li>Printing the curricula books.</li> </ul>											
<p><b>Lessons learn and progress of the project:</b></p> <ul style="list-style-type: none"> <li>Adult who finished their literacy courses can continue their education through Equivalency Education. Literate adult tend to have more dignity and participate actively in social and economic life. Literacy also improves people’s understanding on health and education matters.</li> <li>The competition between dialect groups may lead to horizontal conflicts between groups. To solve the conflicts, SIL has facilitated the formation of Literacy Committee for the conflicting groups.</li> <li>To overcome the transportation problems (some areas are not reachable by boats, cars or foots) SIL have helped facilitate the building of airplane strips in some isolated areas.</li> <li>Books that are written in local languages can build community self esteem. Children and adults are very proud because they have books in their own languages.</li> <li>The local content modules are used by local teachers. There were 38 teachers and 13 tutors in Teminabuan District who are trained to use the module.</li> <li>The local content text books are used by 2200 elementary students in Teminabuan District.</li> </ul>											



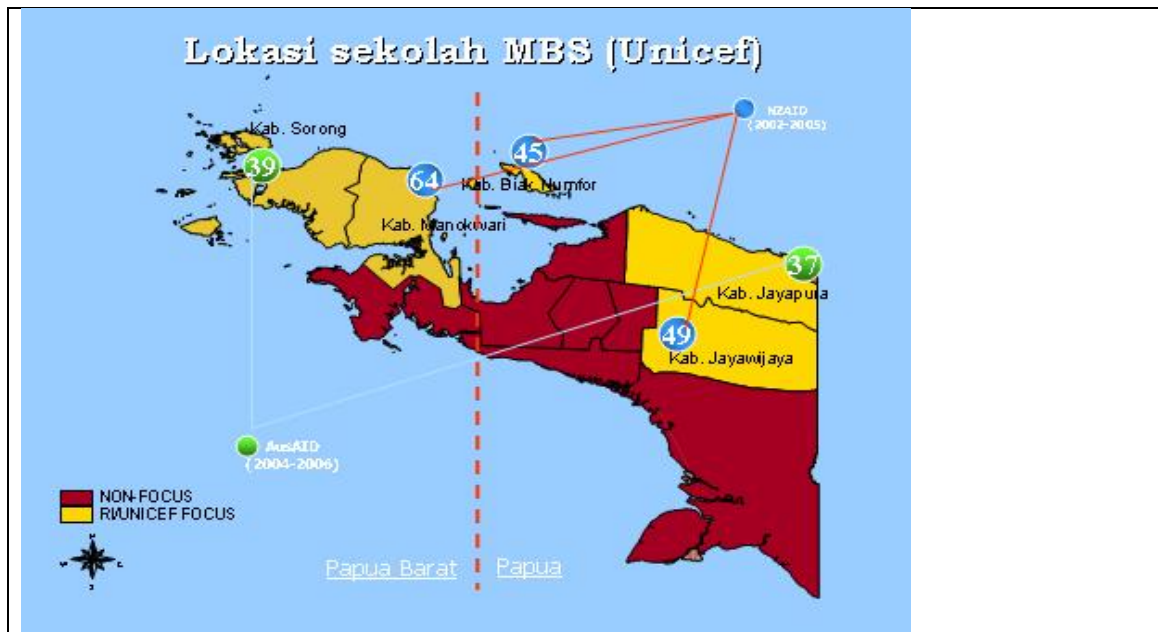
- Sometimes local community only wants money or financial aids but they misuse the aids. To increase local community participation, we have to build communities' sense of belonging to the program, involve local community as the cadre or facilitator.
- Another challenge is limited funding. For a solution to this problem, we are still relying on our personal funds.
- Conflicts between villages and lack of transportation to reach isolated areas may worsen the living condition of local people's group. SIL has asked the local government to facilitate the conflict resolutions between conflicting groups.



Project Information Sheet

**Creating Learning Communities for Children (CLCC) Phase 2**

<p><b>Implementing Agency</b></p> <p>UNICEF (and UNESCO)</p>	<p><b>Project Duration:</b></p> <p>From : 2007 To : 2009</p>										
<p><b>Funding</b></p> <p>NZAID: USD 165,600 in 2007</p>	<p><b>Implementing Partners</b></p> <p>Departemen Pendidikan Nasional Dinas Pendidikan &amp; Pengajaran Papua Barat and Papua Province</p>										
<p><b>Project Description</b></p> <p>The purpose of CLCC is to develop and disseminate an appropriate and replicable model in order to improve the quality of learning for primary school children in Indonesia and to hand over more responsibility to schools and community to plan and utilize surrounding resources in more effective way.</p>											
<p><b>Working sector:</b></p> <p><input type="checkbox"/> 1-1 Food &amp; Nutrition Intake</p> <p><input type="checkbox"/> 1-2 Health (HIV/AIDS)</p> <p><input checked="" type="checkbox"/> 1-3 Education</p> <p><input type="checkbox"/> 1-4 Local Economy</p> <p><input type="checkbox"/> 1-5 Gender Equality</p> <p><input type="checkbox"/> 1-6 Basic Infrastructure</p> <p><input type="checkbox"/> 1-7 Village level Capacity Development</p> <p><input type="checkbox"/> 2-0 Sustainable Environment management</p> <p><input type="checkbox"/> 3-0 Vocational Training / Human Resource Development</p> <p><input type="checkbox"/> 4-0 Other</p>	<p><b>Location:</b></p> <p><input checked="" type="checkbox"/> Province</p> <p><input checked="" type="checkbox"/> Kabupaten</p> <p><input type="checkbox"/> Kota</p> <p><input type="checkbox"/> District(Kecamatan)</p> <p><input type="checkbox"/> Village</p> <table border="1" data-bbox="842 1290 1311 1532"> <tr> <td><b>Province</b></td> <td>West Papua</td> </tr> <tr> <td><b>Kabupaten</b></td> <td>Sorong and Manokwari</td> </tr> <tr> <td><b>Kota</b></td> <td></td> </tr> <tr> <td><b>District (Kecamatan)</b></td> <td></td> </tr> <tr> <td><b>Village</b></td> <td></td> </tr> </table>	<b>Province</b>	West Papua	<b>Kabupaten</b>	Sorong and Manokwari	<b>Kota</b>		<b>District (Kecamatan)</b>		<b>Village</b>	
<b>Province</b>	West Papua										
<b>Kabupaten</b>	Sorong and Manokwari										
<b>Kota</b>											
<b>District (Kecamatan)</b>											
<b>Village</b>											

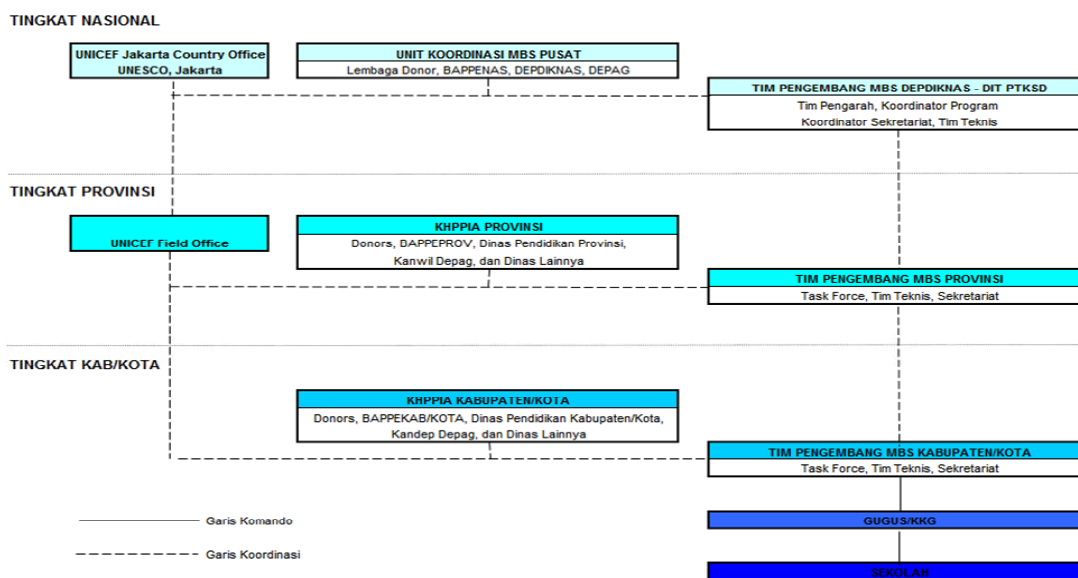


**Plan, methods and mechanism of the implementation:**

Programme implementation principles:

1. CLCC programme is executed through existing system, that is working in the available framework in terms of policy, mechanism and structure through Badan Perencanaan dan Pembangunan Nasional (Bappenas), Departemen Pendidikan Nasional (Depdiknas), Departemen Agama (Depag), Badan Perencanaan Pembangunan Province/Kabupaten/Kota (Bappeda prov/Kab/Kota), Dinas Pendidikan Province/Kabupaten/ Kota, Gugus Sekolah, Pengawas, and Unit Pelaksana Teknis Dinas (UPTD).

**STRUKTUR KEMITRAAN DALAM IMPLEMENTASI PROGRAM MBS**





2. Being democratic, participative and accountable in planning, utilizing and evaluation to achieve systematic changes.
3. Improving cooperation among government, donors, international agencies or non government organization involved in the efforts to improve the quality of basic education.
4. Integration between school management, community participation and learning process change that centers on pupils to get quality of education improved.

**CLCC Components:**



1. **Active-creative, joyful and effective Learning (AJEL)**  
Children experience AJEL as the result in education facilitator/teacher understanding improvement towards AJEL, that is life-skills oriented and violence prevention in schools.

**2. School Management**

Children go to school in schools that have transparent, accountable and participative management with a policy which gives protection from violence and creates friendly and inclusive environment for children



**3. Community Participation**

Children are supported to study by community that is actively involved in general schooling process



<b>Activities:</b>		
<p><b>Advocacy</b> Improving support (policy and fund) from central and local governments for replication of CLCC to improve quality of basic education</p>	<p><b>National Workshop</b> to arrange guidelines and improvement of CLCC design</p>	<p><b>Monitoring &amp; Evaluation</b> to understand direct improvement occurs schools and to identify implementation obstacles of CLCC</p>
	<p><b>Training of Trainers / ToT</b></p> <ul style="list-style-type: none"> <li>• National and provincial level</li> <li>• Kabupaten/kota level (In-Service Teacher Training)</li> <li>• School level (On-Service Teacher Training)</li> </ul>	
<p><b>Lessons learn and progress of the project</b></p> <p>As a result of the implementation of CLCC/MBS in Papua, so 1943 teachers had been trained continuously with AJEL principles, and 235 headmasters and school supervisor have knowledge about Creating Learning Communities for Children and parents and community participation get improved. The achievement had brought some benefits for more than 35.000 primary school children in Province Papua and Province papua Barat.</p> <p>In the next 3 years cycle, CLCC tries to improve and accelerate institutional process of CLCC principles by improving the sense of ownership from government. Thus, CLCC will keep on supporting, especially in supervising the government of Province Papua and Papua Barat to adopt, replicate and implement CLCC methods.</p>		



# BP3D WEST PAPUA PROVINCE

## Harmonisation of Support to Human Development Programmes



### Project Information Sheet

### **Basic Education – Decentralized Basic Education**

Contributed by USAID

<p><b>Implementing Partner</b></p> <p>Education Development Center                  Attn: Mike Calvano                  Jakarta Stock Exchange, Tower 2 Suite 1403, Jakarta                  Tel: 62-21-515-0454                  Email: <a href="mailto:mcalvano@edc.org">mcalvano@edc.org</a></p> <p>Research Triangle Institute                  Attn: Dan Moulton                  Jakarta Stock Exchange, Tower 1 29th Floor, Jakarta                  Tel: 62-21-515-2772                  Email: <a href="mailto:dmoulton@rti.org">dmoulton@rti.org</a></p> <p>Note: Project office being established in Sorong, in connection with USAID Local Government Support Project.</p>	
<p><b>Funding:</b></p> <p>Regional funding levels are not available.</p>	<p><b>Implementing Partners</b></p> <p>District Education Offices in Kota Sorong, Kab. Manokwari and Kab. Sorong Selatan</p> <p>Cendrawasih University, Education Faculty</p>
<p><b>Project Description:</b></p> <p>The focus of the Decentralized Basic Education (DBE) program in Papua is two-fold: 1) to improve district level capacity in West Papua province to effectively manage basic education services; and 2) improve the quality of teaching and learning in primary schools. Through the Research Triangle Institute, DBE will develop local capacity to prepare and implement education development plans based on community and parental participation, strengthen school committees, and improve education financial, asset and personnel management. Through the Education Development Center, DBE will improve the quality of teaching and learning by training education faculty and teachers at Cendrawasih University in Jayapura. USAID's education activities in Papua and West Papua provinces are implemented in partnership with British Petroleum through a multi-year public-private alliance.</p>	
<p><b>Working sector:</b></p> <p><input type="checkbox"/> 1-1 Food &amp; Nutrition Intake</p> <p><input type="checkbox"/> 1-2 Health</p> <p><input checked="" type="checkbox"/> 1-3 Education</p> <p><input type="checkbox"/> 1-4 Local Economy</p> <p><input type="checkbox"/> 1-5 Gender Equality</p>	<p><b>Location:</b></p> <p><input type="checkbox"/> Province</p> <p><input checked="" type="checkbox"/> Kabupaten</p> <p><input checked="" type="checkbox"/> Kota</p> <p><input type="checkbox"/> District (Kecamatan)</p> <p><input type="checkbox"/> Village</p>

# BP3D WEST PAPUA PROVINCE

## Harmonisation of Support to Human Development Programmes



<input type="checkbox"/> 1-6 Basic Infrastructure <input type="checkbox"/> 1-7 Village level Capacity Development <input type="checkbox"/> 2-0 Sustainable Environment management <input type="checkbox"/> 3-0 Vocational Training / Human Resource Development <input type="checkbox"/> 4-0 Other	<b>Province</b>	West Papua
	<b>Kabupaten</b>	Manokwari, Sorong selatan
	<b>Kota</b>	Sorong
	<b>District (Kecamatan)</b>	
	<b>Village</b>	
<b>Plan, methods and mechanism of the implementation:</b>  Technical assistance and training		
<b>Lessons learn and progress of the project:</b>  Program activities began in September 2006.		



Project Information Sheet

**BERMUTU-Better Education through Reformed Management and Universal Teacher Upgrading**

<p><b>Implementing Agency</b></p> <p>The World Bank</p>	<p><b>Project Duration:</b></p> <p>From : July 2007 To : December 2013</p>										
<p><b>Funding:</b></p> <p>US\$ 195,000,000 from IDA, IBRD, Government of Netherlands</p>	<p><b>Implementing Partner</b></p> <p>Ministry of Education Indonesia Department of Education and Teaching Papua Province</p>										
<p><b>Project Description</b></p> <p>The development objective of the Better Education through Reformed Management and Universal Teacher Upgrading Project (BERMUTU) in Indonesia is to contribute to the improvement of the overall quality and performance of teachers through enhancing teachers' knowledge of subject matter and pedagogical skills in the classroom.</p>											
<p><b>Working sector:</b></p> <p><input type="checkbox"/> 1-1 Food &amp; Nutrition Intake</p> <p><input type="checkbox"/> 1-2 Health (HIV/AIDS)</p> <p><input checked="" type="checkbox"/> 1-3 Education</p> <p><input type="checkbox"/> 1-4 Local Economy</p> <p><input type="checkbox"/> 1-5 Gender Equality</p> <p><input type="checkbox"/> 1-6 Basic Infrastructure</p> <p><input type="checkbox"/> 1-7 Village level Capacity Development</p> <p><input type="checkbox"/> 2-0 Sustainable Environment management</p> <p><input type="checkbox"/> 3-0 Vocational Training / Human Resource Development</p> <p><input type="checkbox"/> 4-0 Other</p>	<p><b>Location:</b></p> <p><input checked="" type="checkbox"/> Province</p> <p><input type="checkbox"/> Kabupaten</p> <p><input type="checkbox"/> Kota</p> <p><input type="checkbox"/> District(Kecamatan)</p> <p><input type="checkbox"/> Village</p> <table border="1" data-bbox="847 1368 1321 1615"> <tr> <td><b>Province</b></td> <td>West Papua</td> </tr> <tr> <td><b>Kabupaten</b></td> <td>Sorong Selatan, Raja Ampat</td> </tr> <tr> <td><b>Kota</b></td> <td></td> </tr> <tr> <td><b>District (Kecamatan)</b></td> <td></td> </tr> <tr> <td><b>Village</b></td> <td></td> </tr> </table>	<b>Province</b>	West Papua	<b>Kabupaten</b>	Sorong Selatan, Raja Ampat	<b>Kota</b>		<b>District (Kecamatan)</b>		<b>Village</b>	
<b>Province</b>	West Papua										
<b>Kabupaten</b>	Sorong Selatan, Raja Ampat										
<b>Kota</b>											
<b>District (Kecamatan)</b>											
<b>Village</b>											
<p><b>Plan, methods and mechanism of the implementation:</b></p> <p>There are 4 components to the Project:</p> <ol style="list-style-type: none"> <li>1. Reforming University-based Teacher Education, which will build capacity of the national accreditation board, provide incentives for teacher training universities to upgrade their curricula and provide incentives to a range of universities (including the Open University) to develop new and better distance education materials for pre- and in-service education of teachers;</li> <li>2. Strengthening Structures for Teacher Improvement at the Local Level, which will provide upgrading opportunities for teachers leading to certification. It will support the development and implementation of policies and procedures for the recognition of prior learning and, through a grants program, support capacity building of principals,</li> </ol>											



- supervisors and the operation of teacher working groups;
3. Reforming Teacher Accountability and Incentives Systems for Performance Appraisal and Career Advancement, which will support the review and reform of policies and procedures governing the progression and promotion of teachers and establish policies and strategies for the continuing professional development of teachers post-certification; and
  4. Improving Program Coordination, Monitoring and Evaluation, which will support the monitoring of Project components 1 through 3, development of an improved teacher database and a range of research and evaluation studies to document the effects of the project on teaching behavior and student achievement.

**Lessons learn and progress of the project:**



Project Information Sheet

**Papua Indigenous Peoples Empowerment (PIPE) Programme**

*Reducing Poverty and Strengthening Peace and Development Mechanisms involving Indigenous Peoples in Papua and Papua Barat (Indonesia)*

**INS/04/MO1/HSF**

**Contributed by ILO**

<p><b>Implementing Partner</b></p> <ul style="list-style-type: none"> <li>• Traditional community organizations (<i>Adat institutions</i>) in the pilot project sites i.e. <i>Reba A'ling; Forum Dumtru; Win Hamo; and Ventori</i> in partnership with assisting local government units.</li> <li>• Partner agencies and NGOs in relation to specific activities.</li> </ul>	
<p><b>Funding:</b></p> <p>+ - 1.5M USD (2006-2008); UN Trust Fund for Human Security (UNTFHS - Government of Japan)</p>	<p><b>Implementing Partners:</b></p> <p>ILO (with other UN agencies) and partners in the National Project Advisory Committee (NPAC) and in the Provincial Project Steering Committee (PSC) – BAPPEDA (as Chairperson), Dinas Tenaga Kerja, Dinas Social, BPMD, APINDO and SPSI;</p>
<p><b>Project Description:</b></p> <p>The project is a 3-year pilot undertaking, which seeks to test a community-driven participatory development (CDPD) approach to poverty reduction and village development among indigenous peoples and a stakeholder-driven strategy for strengthening peace and development mechanisms in Papua and Papua Barat-Indonesia. It capitalizes on the native capacity of the indigenous peoples for individual and collective self-reliance and on the fundamental capacity and willingness of multi-sectoral stakeholders to sustain peace and development in the area.</p> <p>The project is being implemented in the context and within the framework of the Special Autonomy Law (OTSUS), the 25-Year Papua Development Plan and the New Papua Development Strategy.</p> <p><b>Objectives:</b></p> <p>The primary objectives of the project are the following:</p> <ol style="list-style-type: none"> <li>1) Enhance the capacity of the indigenous Papuans, together with non-Papuans with whom they live, to initiate, plan, implement and sustain their own poverty reduction and community development activities within their traditional villages using primarily their indigenous knowledge systems and practices;</li> <li>2) Mainstream gender issues and promote gender equality in the local development process; and</li> <li>3) Strengthen the capacity of multi-sectoral stakeholders to sustain existing site-specific peace and development mechanisms.</li> </ol>	



<p><b>Working sector:</b></p> <ul style="list-style-type: none"> <li><input type="checkbox"/> 1-1 Food &amp; Nutrition Intake</li> <li><input type="checkbox"/> 1-2 Health</li> <li><input type="checkbox"/> 1-3 Education</li> <li><input checked="" type="checkbox"/> 1-4 Local Economy</li> <li><input checked="" type="checkbox"/> 1-5 Gender Equality</li> <li><input type="checkbox"/> 1-6 Basic Infrastructure</li> <li><input type="checkbox"/> 1-7 Village level Capacity Development</li> <li><input type="checkbox"/> 2-0 Sustainable Environment management</li> <li><input checked="" type="checkbox"/> 3-0 Vocational Training / Human Resource Development</li> <li><input type="checkbox"/> 4-0 Other</li> </ul> <p>The project focuses on providing support to poverty reduction and community development initiatives of indigenous peoples at the village level; support to initiatives for strengthening peace and development mechanisms; and, support to mainstreaming gender issues in the development process at the community level.</p>	<p><b>Location:</b></p> <ul style="list-style-type: none"> <li><input type="checkbox"/> Province:</li> <li><input type="checkbox"/> Kabupaten:</li> <li><input type="checkbox"/> Kota:</li> <li><input checked="" type="checkbox"/> District(Kecamatan):</li> <li><input checked="" type="checkbox"/> Village/Desa:</li> </ul> <table border="1" style="width: 100%; border-collapse: collapse; margin-top: 10px;"> <tr> <td style="padding: 2px;"><b>Province</b></td> <td style="padding: 2px;">West Papua</td> </tr> <tr> <td style="padding: 2px;"><b>Kabupaten</b></td> <td style="padding: 2px;">Manokwari</td> </tr> <tr> <td style="padding: 2px;"><b>Kota</b></td> <td style="padding: 2px;"></td> </tr> <tr> <td style="padding: 2px;"><b>District (Kecamatan)</b></td> <td style="padding: 2px;">Tanah Rubuh, Kebar</td> </tr> <tr> <td style="padding: 2px;"><b>Village / Desa</b></td> <td style="padding: 2px;"></td> </tr> </table>	<b>Province</b>	West Papua	<b>Kabupaten</b>	Manokwari	<b>Kota</b>		<b>District (Kecamatan)</b>	Tanah Rubuh, Kebar	<b>Village / Desa</b>	
<b>Province</b>	West Papua										
<b>Kabupaten</b>	Manokwari										
<b>Kota</b>											
<b>District (Kecamatan)</b>	Tanah Rubuh, Kebar										
<b>Village / Desa</b>											

**Plan, methods and mechanism of the implementation:**

In its implementation, the project adheres to the processes set out under the community – driven participatory development (CDPD) methodology. Relative to the first objective, the project activities are implemented by the partner communities in the pilot project sites through their own traditional community organizations. They identify, plan and implement their own gender-sensitive poverty reduction and village development activities based on their felt needs and existing resources. Concerned local government agencies and the ILO provide facilitative support services in the form of physical and social infrastructure, complementary technical knowledge and small grants.

In relation to the second and third objectives, the implementation project activities is done by the stakeholders themselves including the government, church groups, LSMs and business organizations. For purposes of these activities, cooperating local government agencies and the ILO likewise provide facilitative support services such as necessary social infrastructure, relevant technical inputs and small grants.

The PSC provides policy guidance in the preparation and implementation of annual project work plans and of the annual community action plans for poverty reduction and village development. They also help monitor the progress of project implementation activities.

As financial manager of the project funds, the ILO makes direct payments in relation to the cost of activities and services rendered. Local government units at the Provincial, Kabupaten / Kota and District levels are encouraged to provide counterpart OTSUS resources for the project in order to expand its coverage in terms of direct beneficiaries.



#### **Lessons learn and progress of the project:**

The project, which is covered by a Memorandum of Understanding between the Provincial Government of Papua and the ILO, has just been through its first year of implementation. During this period, the preparatory stage has been completed and the implementation stage has begun.

Project orientation meetings with partner agencies have already been conducted and, in order to systematize the delivery of support by the partner agencies, the NPAC and the PSC have been organized.

Through the coordination of the PSC, pilot project sites have been identified and validated. Community development facilitators (CDFs) have been selected by the partner communities and have undergone training on community-driven participatory development and poverty reduction techniques. Community leaders have also undergone initial training on village development and organizational management.

With the help of the CDFs, all four partner communities have completed their respective baseline survey and action plan for poverty reduction and village development. They have also prepared their specific activity proposals and identified corresponding training needs.

The implementation by the partner communities, through their own traditional community organizations, of their community action plans for village development and poverty reduction has started. Basic socio-economic skills development training activities covering priority local areas of production such as in agriculture (vegetable production), horticulture (Cacao and Coffee production), poultry/animal husbandry (native chicken, hogs and cows), inland/deep sea fishing, and fruit/food processing and cooperatives management have been completed. More than 700 community members have already participated in these skills development activities.

Preparations are now underway for follow-through activities and the implementation of activities under the second and third objectives – the strengthening of peace and development mechanisms and the mainstreaming of gender equality issues in the development process.

Initial feedback indicate that most partner agencies as well as indigenous community leaders and members welcome the CDPD approach to poverty reduction and village level development. They are enthusiastic and willing to support and participate in the undertaking.



Project Information Sheet

**Water and Environmental Sanitation Programme**

Contributed by UNICEF

<b>Implementing Agency</b>											
UNICEF											
<b>Funding</b>	<b>Implementing Partners:</b>										
US \$ 1,600,000 (2007)	BAPPEDA, Dinas PU, Dinas P & P, BPMD and CBO										
<b>Project Description</b>											
<p>Water and environmental sanitation programme is divided into 3 components, they are:</p> <ol style="list-style-type: none"> <li>1. Water, Sanitation &amp; Hygiene in villages Goal: To improve healthy and hygiene attitudes and to increase the access for water and sanitation in about 58 villages in 8 kabupatens in Province Papua &amp; Papua Barat in 2010.</li> <li>2. Water, Sanitation &amp; Hygiene at School Goal : To improve hygiene attitudes and access for water and sanitation for students and teachers in about 150 elementary schools in 8 kabupatens and kota in Province Papua &amp; Papua Barat in 2010.</li> <li>3. Water and Environmental Sanitation in city slum areas. Goal: To improve healthy life attitudes and access for water and sanitation among urban community.</li> </ol>											
<b>Working sector:</b>	<b>Location:</b>										
<input type="checkbox"/> 1-1 Food & Nutrition Intake <input type="checkbox"/> 1-2 Health (HIV/AIDS) <input type="checkbox"/> 1-3 Education <input type="checkbox"/> 1-4 Local Economy <input type="checkbox"/> 1-5 Gender Equality <input checked="" type="checkbox"/> 1-6 Basic Infrastructure <input type="checkbox"/> 1-7 Village level Capacity Development <input type="checkbox"/> 2-0 Sustainable Environment management <input type="checkbox"/> 3-0 Vocational Training / Human Resource Development <input type="checkbox"/> 4-0 Other	<input checked="" type="checkbox"/> Province <input checked="" type="checkbox"/> Kabupaten <input checked="" type="checkbox"/> Kota <input checked="" type="checkbox"/> District(Kecamatan) <input checked="" type="checkbox"/> Village										
	<table border="1"> <tr> <td><b>Province</b></td> <td>West Papua</td> </tr> <tr> <td><b>Kabupaten</b></td> <td>Sorong Selatan, Raja Ampat, Bintuni, Sorong</td> </tr> <tr> <td><b>Kota</b></td> <td></td> </tr> <tr> <td><b>District (Kecamatan)</b></td> <td>Tbd</td> </tr> <tr> <td><b>Village</b></td> <td>Tbd</td> </tr> </table>	<b>Province</b>	West Papua	<b>Kabupaten</b>	Sorong Selatan, Raja Ampat, Bintuni, Sorong	<b>Kota</b>		<b>District (Kecamatan)</b>	Tbd	<b>Village</b>	Tbd
<b>Province</b>	West Papua										
<b>Kabupaten</b>	Sorong Selatan, Raja Ampat, Bintuni, Sorong										
<b>Kota</b>											
<b>District (Kecamatan)</b>	Tbd										
<b>Village</b>	Tbd										



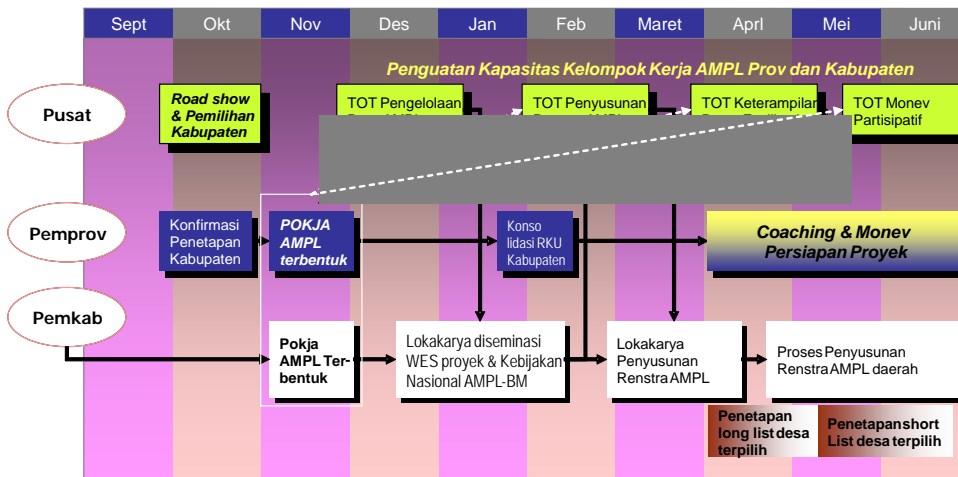
**Plan, methods and mechanism of the implementation:**

1. Water & Village Sanitation

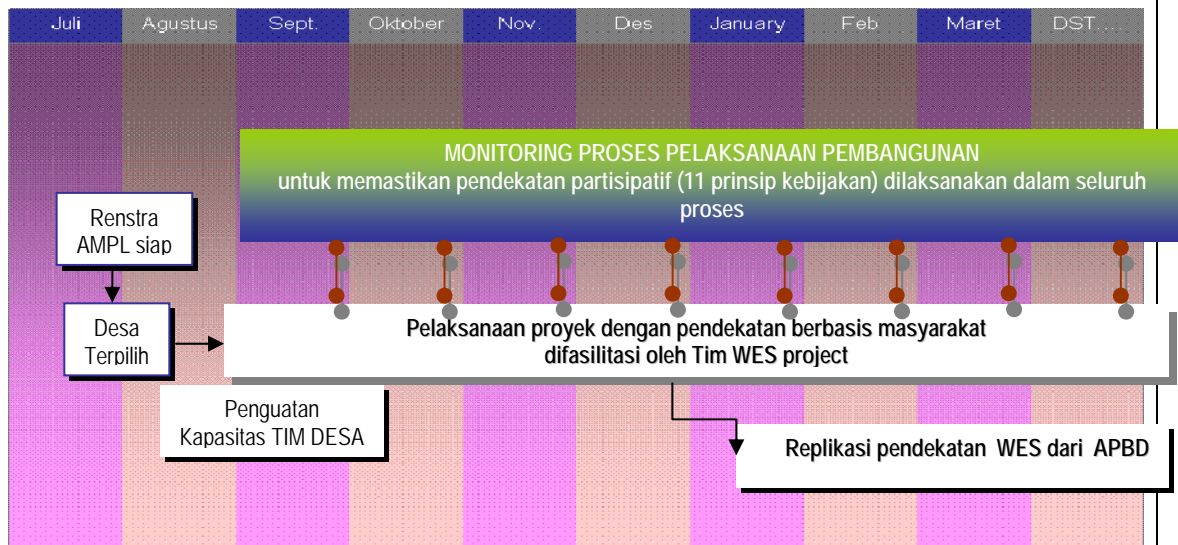
Implementation Strategy:

- Water, sanitation and hygiene for households and schools in the project areas are done in an integrated package.
- Survey KAP will be conducted in each project area in early stage to know the development and as material to make approach that will be applicable based on village condition.
- People mobilization and hygiene promotion will be an entry point in this programme.
- AMPL action plan in villages is developed with community participation process.

**WES ACTIVITY PREPARATORY STAGE**



**WES ACTIVITY CONSTRUCTION STAGE**





**Lessons learn and progress of the project:**

This programme will be conducted in 2008 with preparatory stage starting on August 2007. Community involvement will become the strength of the programme so it is expected to have sustainable programme.





Project Information Sheet

**Capacity 2015 – Partnerships for Sustainable Development in Papua & West Papua.**

Contributed by UNDP-CAP2015

<p><b>Implementing Partner</b></p> <p>UNDP/Capacity 2015 in Papua &amp; West Papua                  Lantai 15, Gedung Surya                  Jalan M.H. Thamrin Kav. 9 Jakarta 10350                  Tel: 3902402/04; Fax: 3902524                  Email: <a href="mailto:cap2015-papua@indo.net.id">cap2015-papua@indo.net.id</a></p>	
<p><b>Funding</b></p> <p>US\$ 1,180,000 (July 2004 – June 2007),                  Beyond Petroleum (BP) and UNDP.</p>	<p><b>Implementing Partners</b></p> <p>Coordination Ministry of Economy,                  BAPPEDA West Papua, BAPPEDA Papua                  and UNDP together with other                  implementing agencies (Papua &amp; West                  Papua Province), BP, local and                  international NGOs, lecturer, and                  IFC/PENSA</p>
<p><b>Project Description</b></p> <p>The goal of Capacity 2015 Project – Partnerships for Sustainable Development in Papua and West Papua (Cap 2015) is to strengthen the capacities of local stakeholders through capacity building activities. This project focused on the achievement of the first goal (to eradicate poverty and hunger), seventh goal (to ensure environmental sustainability) and eight goal (to develop global partnership for development).</p> <p>Since the first launching on 2004 to July 2006, this project had been focused on spatial planning of West Papua Province through ecosystem-based development planning.</p> <p>The goals of project activities are to ensure the environmental and biodiversities sustainability through proper spatial planning which can prevent the environmental damages caused by natural resources exploitation (e.q. LNG exploration by Beyond Petroleum Tangguh).</p> <p>The expected output of the project is a better spatial planning which supports the improvement of sustainable development program in West Papua. Expectantly, local stakeholders in West Papua will be ready to plan their regional development before the implementation of revenue sharing between BP Tangguh, central government and West Papua government in 2015.</p>	



The activities had been done until June 2006 are:

- 1) Develop partnership between private sectors, government and civil society
- 2) Conduct strategic planning on West Papua Long Term Planning and spatial planning.
- 3) Conduct series of activities to improve the regulation to utilize the opportunities related to BP Tangguh, and other foreign big investment in West Papua.
- 4) Strengthen the capacities of local stakeholders to support the implementation of spatial planning which can support the achievement of MDGs.

Currently, the project team has developed Regional Development Plan (RDP) for West Papua and Joint Management Area (JMA) concepts in Teluk Bintuni. Project team also revised the *Diversified Growth Strategy concepts* which can support the activities of RDP and JMA.

Since July 2006, project team has opened a secretariat office in Manokwari. The implementation phase has been starting since July 2006. The implementation of the projects involved West Papua government (Head of Bappeda and Head of Division in Bappeda). Until December 2006, project team has socialized the project documents to the West Papua government and they accepted, adopted and integrated the inputs from project documents in their Regional Medium-term Development Plan/Rencana Pembangunan Jangka Menengah Daerah (RPJMD: 2006-2011).

The governor authorized the implementation of RPJMD and Working Group through Governor Regulation 9/2006 dated 9 October 2006). Now, project team is helping West Papua government to prepare Long-term Development Planning 2006-2026/Rencana Pembangunan Jangka Panjang 2006-2026, and deriving the Satuan Kerja Perangkat Daerah/SKPD. Project tem is preparing the project initiative for West Papua government based on RPJMD. This project initiative will guide SKPD in developing Regional Expenditure Plan/ Rencana Anggaran Pendapatan Belanja Daerah in 2007.

The Diversified Growth Strategy (DGS) were also adopted by West Papua government in their Rencana Pengembangan Wilayah dan Investasi (RPWI). The RPWI is developed by UNIPA in Manokwari with financial support from West Papua government. The amount of financial support is Rp. 1.8 billion. RPWI will become guidelines for West Papua province and its regencies.

Based on the result of Director Team meeting on 8 December 2006 in Jakarta, the project MOU with West Papua province will be ended in March 2007. New MOU will be signed by West Papua government and can be implemented. The implementation of new MOU will be referred to new projects initiative. West Papua government will continue the project implementation, in cooperation with BP Tangguh or/and other donor agencies or/and UNDP People-centered Development Programme.

**Working sector:**

- 1-1 Food & Nutrition Intake
- 1-2 Health
- 1-3 Education
- 1-4 Local Economy
- 1-5 Gender Equality
- 1-6 Basic Infrastructure
- 1-7 Village level Capacity Development

**Location:**

- Province
- Regencies
- Municipalities
- District (Kecamatan)
- Villages (Kampung)



<input checked="" type="checkbox"/> 2-0 Sustainable Environment Management <input checked="" type="checkbox"/> 3-0 Vocational Training / Human Resource Development <input type="checkbox"/> 4-0 Other  Program focuses on regional planning related to natural resources management. Especially in spatial planning, capacity building and strengthening partnership.	<b>Province</b>	West Papua
	<b>Regencies</b>	Manokwari, Teluk Wondama, Teluk Bintuni, Fakfak, Sorong Selatan, Sorong, Kaimana, Raja Ampat
	<b>Municipalities</b>	Sorong
	<b>District (Kecamatan)</b>	-
	<b>Villages (Kampung)</b>	-

**Plan, methods and mechanism of the implementation:**

Project team in cooperation with West Papua Regional Planning Agency (Head and Head of Division in Bappeda) plan development programs in West Papua together with local stakeholders, especially Satuan Perangkat Kerja Daerah (SPKD) at provincial level, Head of Bappeda from regencies and municipalities in West Papua, and other development actors in West Papua (UNIPA, local and international NGOs, private sectors etc.)

**Lessons learn and progress of the project:**

Local stakeholders (authorized parties, CSOs, indigenous groups etc.) were not fully participating in the development of spatial planning documents. In the future, local values must be integrated in guidelines for RDP. The integration of local values will develop sense of belonging, and acceptance of RDP by the communities.

The implementation of projects was delayed because the uncertainty of West Papua status-even the status of West Papua has been legalized by Constitutional Court/Mahkamah Konstitusi on November 2004. Finally, on 24 July 2006, West Papua Province started their governance, separated from Papua province. Related to uncertain conditions at provincial level, activities of this project were focused on regency level. But since July 2006, project team has started to cooperate with provincial government. Project team gives technical assistance to Head of Bappeda and Head of Division in West Papua Bappeda.

The inauguration of West Papua governor remarks the new governance in West Papua. New governance should give full attention to environment issues in each area. The capacity strengthening program (through trainings and assistances) become an urgent agenda. The capacity strengthening will support local government to implement the best model to prevent environmental damages, especially damages which caused by big investment.

Infrastructures development in West Papua must be prioritized based on communities needs, and not based on short term goal, efficiency and effectiveness. For example: high ways can support BP Tangguh activities. But it also triggers the high rates of population growth. Population growth will give certain impacts to the local communities and environment. So, it is wise to consult the communities before implementing certain programs or regulations.

Diversified Growth Strategy will prevent the concentration of development in the operating area of BP Tangguh, in Teluk Bintuni. Activities in Diversified Growth Strategy will be conducted in other regency nearby Teluk Bintuni (Fakfak, Sorong Selatan, and Manokwari).



There are needs to revitalized the SP3 team through assistances and trainings to support the development activities in each region.

At first, project team was focused on the implementation of project activities based on each expected output. This situation leads to the disharmony between members of the group, especially in project main activities. Late in 2005, the activities of project team have become more integrated, based on the continuity of project achievements. Some of project achievements are the development of Regional Development Plant, Joint Management Area and Diversified Growth Strategy documents.

Project team has been located in one place since 1 July 2006. This arrangement was made based on main needs of project to concentrate in socializing project documents to West Papua stakeholders. This arrangement gives positive results in RPJMD document finalization. The finalization of RPJMD document only takes 72 days, start from the first day of West Papua governor inauguration. The implementation of RPJMD has been legalized through Governor Decree.

On 8 December 2006, Director Team has decided to separate the activities between Papua and West Papua Province. The separation was delayed for a long time. The MOU of the projects will be terminated in March 2007 and then project team will develop initiative projects based on new MOU with West Papua province to continue the project implementation that will be integrated in the activities of government of West Papua, other donors, and/or other UNDP projects such as People-centered Development Programme.

Activities that have been conducted in *Capacity 2015 in West Papua* can be used as base for the development of new initiative document to ensure the sustainability of idea, philosophy, good planning practices which have been implemented by West Papua government.

# BP3D WEST PAPUA PROVINCE

## Harmonisation of Support to Human Development Programmes



### Project Information Sheet

### **Partnerships for e-Prosperity for the Poor (PePP)**

Contributed by UNDP-PePP

<p><b>Implementing Partner</b></p> <p>The National Development Planning Agency (Bappenas) Directorate of Poverty Alleviation</p> <p>Jl.Taman Suropati No.2 Jakarta 10310 Telp.021-3915227</p>			
<p><b>Funding</b></p> <p>+/- 1 Million USD, fully funded by UNDP</p>	<p><b>Counterparty</b></p> <p>Local government and Bappeda</p>		
<p><b>Project Description</b></p> <p>Partnerships for e-Prosperity for the Poor (Pe-PP) is designed to bring existing resources and knowledge together to assist and empower poor communities to utilise information and communication technologies (ICT) for their access to basic social services and economic activities, thus contributing to the achievement of the Millennium Development Goals.</p> <p>Pe-PP pronounces like “pep” meaning “energy and high spirits”, and it envisions poor communities empowered with access to information, actively communicate their needs and concerns, and help themselves improve their livelihoods. This project has the following objectives:</p> <ul style="list-style-type: none"> <li>- To empower and mobilise poor communities for economic activities and accessing social services through better access to information and communication</li> <li>- To forge strategic partnerships in bringing individual efforts together for the benefit of the poor communities</li> <li>- To establish multi-purpose community development telecentres to provide shared access to information and communication to poor communities and to be a channel through which partners can bring services and opportunities</li> <li>- To draw on and disseminate the best practices and lessons learned from the pilot projects in order to raise awareness of the applicability and potential of ICT for poverty reduction, thus contributing to the formulation of national / regional policy and replication of successful implementation of ICT for poverty reduction activities</li> </ul>			
<p><b>Working sector:</b></p> <p><input type="checkbox"/> 1-1 Food &amp; Nutrition Intake</p> <p><input type="checkbox"/> 1-2 Health</p> <p><input type="checkbox"/> 1-3 Education</p> <p><input type="checkbox"/> 1-4 Local Economy</p> <p><input type="checkbox"/> 1-5 Gender Equality</p> <p><input type="checkbox"/> 1-6 Basic Infrastructure</p> <p><input checked="" type="checkbox"/> 1-7 Village level Capacity Development</p>	<p><b>Location:</b></p> <p><input type="checkbox"/> Province:</p> <p><input type="checkbox"/> Regency:</p> <p><input type="checkbox"/> Municipality:</p> <p><input type="checkbox"/> District (Kecamatan):</p> <p><input checked="" type="checkbox"/> Village:</p> <table border="1" style="width: 100%;"> <tr> <td style="width: 50%;"><b>Province</b></td> <td>West Papua</td> </tr> </table>	<b>Province</b>	West Papua
<b>Province</b>	West Papua		



<input type="checkbox"/> 2-0 Sustainable Environment Management <input type="checkbox"/> 3-0 Vocational Training / Human Resource Development <input checked="" type="checkbox"/> 4-0 Other ( <i>multi-purpose community development telecenter – serving other areas of development intervention through Information Communication Technology</i> )	<table border="1"> <tr> <td><b>Regency</b></td> <td>Fakfak</td> </tr> <tr> <td><b>Municipality</b></td> <td>-</td> </tr> <tr> <td><b>District (Kecamatan)</b></td> <td>Teluk Patipi</td> </tr> <tr> <td><b>Village</b></td> <td>Sekban / Tetar</td> </tr> </table>	<b>Regency</b>	Fakfak	<b>Municipality</b>	-	<b>District (Kecamatan)</b>	Teluk Patipi	<b>Village</b>	Sekban / Tetar
<b>Regency</b>	Fakfak								
<b>Municipality</b>	-								
<b>District (Kecamatan)</b>	Teluk Patipi								
<b>Village</b>	Sekban / Tetar								
<p><b>Plan, methods and mechanism of the implementation:</b></p> <p>Pe-PP telecenter model integrates access of information and communication technology with community empowerment activities. It is implemented through intensive facilitation to community groups in participatory manners. Facilitator Infomobilization (community facilitator) is hired to empower poor communities to utilize information and communication technologies (ICTs) for their access to basic social services and economic activities.</p> <p>Telecenter should provide demand-driven services which clearly link the community's daily activities with the ICTs provision. This is especially important for the sustainable implementations of telecenter in rural poor areas. Therefore, an integrated approach of access provision and community development is indispensable.</p> <p>The establishment of telecenter in Fakfak Regency is designed to be an integrated part of the People-centered Development Programme. Therefore, intensive communication with People-centered Development Program team is crucial to develop further synergy for the successfulness of the program which expected can contribute to the achievement of the Millennium Development Goals.</p>									
<p><b>Lessons learn and progress of the project:</b></p> <p>Pe-PP pilot telenceter in Papua and West Papua were just established on December 2006. One telecenter is located in Sekban village, Fakfak Kota District, and the other one is in Tetar village, Teluk Patipi District. Selection of locations was based on some considerations, such as: the readiness of basic infrastructure (power supply and telephone line); number of population, local commodity that potentially can be developed (such as nutmeg), and also the readiness of the host of telecenter.</p> <p>A full-time telecenter management team has been recruited. In Sekban village, this team consist of 1 facilitator infomobilization and 1 IT administrator. The manager of telecenter in Sekban will be recruited soon. In Teluk Patipi village, Tetar District, the project has recruited 1 full-time facilitator infomobilization. The local government has committed to hire and strengthen the team for the successfulness of the telecenter.</p> <p>Since the telecenters are just operation in a month, not much lessons learned can be obtained yet. However, what is crucial is strong committment from local government to seriously to sustain this initiative for the prosperity of poor people in Papua and West Papua.</p>									



Project Information Sheet

***People-centred Development Programme - Strengthening Government and CSOs Capacities in Achieving Millennium Development Goals***

Contributed by UNDP

<p><b>Implementing Partner</b></p> <ul style="list-style-type: none"> <li>- Provincial Level Advisory Boards in Papua and West Papua Province.</li> <li>- BAPPEDA of Papua and West Papua Province</li> <li>- BPMD Papua Province</li> </ul>	
<p><b>Funding</b></p> <p>UNDP/TRAC : USD 2.500.000                  Government of Netherland: USD 8.000.000                  NZAID: USD 1.350.000                  Parallel fund: USD 4.000.000</p>	<p><b>Implementing Partners</b></p> <p>National Planning Agency (BAPPENAS) and UNDP (and other UN agencies).</p>
<p><b>Project Description:</b></p> <p>This programme of support to develop government and civil society capacities to achieve the MDGs has been formulated based on a participatory assessment of needs, and through a process of multi-stakeholder dialogue in Papua and West Papua, focusing on the local government and people’s priorities of health, education and community livelihoods. The People-centered Development Programme sets out a structure within which multiple stakeholders can collaborate in strengthening local capacities of strategic importance for Papua and West Papua, namely:</p> <ol style="list-style-type: none"> <li>1) Pro-poor policy development and operational planning;</li> <li>2) Locally-effective delivery of basic services;</li> <li>3) Monitoring and evaluation of poverty reduction programmes; and</li> <li>4) Coordination of donor support.</li> </ol> <p>The People-centered Development Programme entails a range of activities under components relating to these four areas, to support the aim of strengthening local capacities of key agencies related to the MDGs. The programme adds value to existing and planned initiatives by improving coordination, creating opportunities for cross-actor learning, partnerships and trust building, It is intended as a five year programme of support, through which further collaborative programmes will be developed to ensure more effective and sustained development assistance to the Papua and West Papua region.</p>	
<p><b>Working sector:</b></p> <ul style="list-style-type: none"> <li><input checked="" type="checkbox"/> 1-1 Food &amp; Nutrition Intake</li> <li><input checked="" type="checkbox"/> 1-2 Health</li> <li><input checked="" type="checkbox"/> 1-3 Education</li> <li><input checked="" type="checkbox"/> 1-4 Local Economy</li> <li><input checked="" type="checkbox"/> 1-5 Gender Equality</li> <li><input checked="" type="checkbox"/> 1-6 Basic Infrastructure</li> <li><input checked="" type="checkbox"/> 1-7 Village level Capacity Development</li> </ul>	<p><b>Location:</b></p> <ul style="list-style-type: none"> <li><input checked="" type="checkbox"/> Province</li> <li><input checked="" type="checkbox"/> Kabupaten</li> <li><input type="checkbox"/> Kota</li> <li><input checked="" type="checkbox"/> District (Kecamatan)</li> <li><input checked="" type="checkbox"/> Village</li> </ul>



<input type="checkbox"/> 2-0 Sustainable Environment management <input type="checkbox"/> 3-0 Vocational Training / Human Resource Development <input type="checkbox"/> 4-0 Other  People-centered Development Programme focused on strengthening capacities of local government and CSO to achieve MDGs, especially in health, education, livelihood, gender and environmental aspects.	<b>Province</b>	<b>West Papua</b>
	<b>Kabupaten</b>	Raja Ampat and Fak-fak
	<b>Districts</b>	Teluk Manyalibit, Ayau, Kokas, Fak-fak Tengah
	<b>Villages (Village)</b>	

**Plan, methods and mechanism of the implementation:**

One advisor from each component will assist government and communities' key institutions to plan their MDGs program. Bappeda will serve as the coordinator of programs in the region and monitor the progress of programs implementation. BPMD will manage the assistance/pendampingan component at District or Village/Village level. Annual work plan will be prepared by implementing partners, and approved by Provincial level Advisory Boards. Advisory Boards will actively participating in monitoring and evaluation of program achievements. UNDP will be the manager of the trust fund and pay directly to the vendors. Provincial and regency government through RESPEK programs will allocate the Otsus fund for basic services delivery. The program expectantly will be expanding (after one or two years) if provincial and regency governments allocate more Otsus fund and donors support additional funding for the achievement of MDGs.

**Lessons learn and progress of the project:**

People-centered Development Programme has been starting since 1 July 2006. The inception phase started from July to December 2006. In the inception phase, the structures and implementing procedures was set up. Series of trainings and assistances also have been conducted. Provincial Bappeda was trained on the preparation of Long Term Development Plan or RPJP based on Synthesis of Papua Needs Assessment and, Medium Term Development Plan or RPJM based on new governor's vision and mission. Assistances were given to Bappeda Mimika, Sarmi, Raja Ampat and Fak-fak Regency) in preparation of RPJM, strategic plan by sector, district support, and fiscal decentralization strategies.

In 2007, many activities has been conducted in each program component:

1. Data collection tools and instruments to collect data on indigenous Papuan people were prepared together with BPS and Bappeda Papua Province; training of trainer for kabupaten/district planner; employment policy review; partnership with CSO in conducting MDG baseline survey at Village and district level; assistance in preparing medium term development plan as well as strategic development plan.





2. Altogether 14 CSOs were contracted to provide RESPEK MDGs related services. Three senior NGOs were recruited to coach CSOs active in three different regions. Fifteen national UNVs were recruited and posted to district and kabupaten. Documents such as CSO Block Grant Mechanism and Concept Paper of Resource Center were developed and socialized to relevant development partners. Three resource centres are being established in Pantai Timur (Sarmi), Pantai Utara (Yapen Waropen) and Bolakme (Jayawijaya). Documentation of best practice from kabupaten.
3. Preliminary MDGs Publication was prepared and published, institutional analysis of BAWASDA and planning of capacity development for BAWASDA.
4. Preparation of donor harmonisation booklet, routine UN coordination meeting, preparation of UN joint framework and day-to-day management of the multidonor office.

Lesson learned during Papua Needs Assessment and program implementation in 2007 are as follows: it can be conclude that there are needs for continuous and long-term assistance to develop Papua and Papua Barat based on best practices from previous approach, and based on approaches that eliminate dependencies. The capacities of local stakeholders need to be strengthen and the partnership between local government and CSOs, especially religious institutions who have wide networks and capacity to support the communities, need to be established. Close coordination at kabupaten level directly or through UNV also support the implementation of activities at kabupaten level. In the other hand, the division of kabupaten requires more efforts in program coordination and assistances.



Project Information Sheet

***Can Decentralization Work for Forests and the Poor?***

Policy research to promote Sustainable Environment management, equitable economic development, and secure local livelihoods in Indonesia

**Contributed by AusAID**

<p><b>Implementing Agency</b></p> <p>Australian Centre for International Agricultural Research (ACIAR), c/- Australian Embassy, Jakarta (ph 021 2550 5578, John Murray – john.murray@dfat.gov.au)</p>	<p><b>Project Duration:</b></p> <p>From : January 2003 To : August 2007</p>										
<p><b>Funding</b></p> <p>Total budget: AUD 640,794 West Papua (est): AUD 24,000</p> <p>Australian Government/ACIAR</p>	<p><b>Implementing Partners</b></p> <p>Centre for International Forestry Research (CIFOR) with Indonesian collaborators including the Department of Forestry, University of Papua, Manokwari</p>										
<p><b>Project Description:</b></p> <p>The project will assist Indonesia to assess and monitor progress in decentralization and to implement, where necessary, corrective measures to ensure success of the decentralization objectives.</p>											
<p><b>Working sector:</b></p> <p><input type="checkbox"/> 1-1 Food &amp; Nutrition Intake  <input type="checkbox"/> 1-2 Health (HIV/AIDS)  <input type="checkbox"/> 1-3 Education  <input type="checkbox"/> 1-4 Local Economy  <input type="checkbox"/> 1-5 Gender Equality  <input type="checkbox"/> 1-6 Basic Infrastructure  <input type="checkbox"/> 1-7 Village level Capacity Development  <input checked="" type="checkbox"/> 2-0 Sustainable Environment management  <input type="checkbox"/> 3-0 Vocational Training / Human Resource Development  <input type="checkbox"/> 4-0 Other</p>	<p><b>Location:</b></p> <p><input type="checkbox"/> Province  <input checked="" type="checkbox"/> Kabupaten  <input type="checkbox"/> Kota  <input type="checkbox"/> District(Kecamatan)  <input type="checkbox"/> Village</p> <table border="1" data-bbox="847 1525 1321 1733"> <tr> <td><b>Province</b></td> <td>West Papua</td> </tr> <tr> <td><b>Kabupaten</b></td> <td>Manokwari</td> </tr> <tr> <td><b>Kota</b></td> <td></td> </tr> <tr> <td><b>District (Kecamatan)</b></td> <td></td> </tr> <tr> <td><b>Village</b></td> <td></td> </tr> </table>	<b>Province</b>	West Papua	<b>Kabupaten</b>	Manokwari	<b>Kota</b>		<b>District (Kecamatan)</b>		<b>Village</b>	
<b>Province</b>	West Papua										
<b>Kabupaten</b>	Manokwari										
<b>Kota</b>											
<b>District (Kecamatan)</b>											
<b>Village</b>											
<p><b>Plan, methods and mechanism of the implementation:</b></p> <p>Project research was undertaken through eight research partners – including the University of Papua and three other Indonesian Universities - under the overall management of CIFOR which, in various ways, made available and disseminated the project’s research findings.</p>											



#### **Lessons learn and progress of the project:**

The project has only recently finished and the final project report is still in draft form. A 2005 review, however, found that the project had achieved most aspects of its original objectives. These included district case studies, policy briefs and synthesis studies around two major themes: fiscal and economic aspects of decentralization; and land tenure, resource management and spatial planning. Community impacts were found to be strong as were capacity building impacts that included a broad range of training.



Project Information Sheet

***Vocational Training Projects - Papua Training Center***

Contributed by **SIL**

<p><b>Implementing Partner</b></p> <p>SIL INTERNATIONAL                  P.O. BOX 1, SENTANI 99352, PAPUA                  Tel. 593 971 Fax. 593 974  <a href="mailto:mike_eastwood@sil.org">mike_eastwood@sil.org</a></p>	
<p><b>Funding</b></p> <ul style="list-style-type: none"> <li>- IDR 2 billion (SIL fund from the sale of SIL office in Abepura)</li> <li>- Office equipment (computer, printer, digital camera) from BPMD</li> </ul>	<p><b>Implementing Partners</b></p> <ul style="list-style-type: none"> <li>▪ Village Community Empowerment Agency</li> <li>▪ Teaching and Learning Department, Papua Province</li> <li>▪ Social Welfare Department, Papua Province</li> <li>▪ Local NGOs: Yayasan Jasa Aviassi Indonesia (YAJASI); Yayasan Betania Indonesia (YBI); Yayasan Pelayanan Antarbudaya; Yayasan Karunia Bhakti Budaya (Kartidaya); Yayasan Penginjilan dan Persekutuan Masieray (YPPM).</li> </ul>
<p><b>Project Description</b></p> <p>In collaborating with the government and local NGOs, SIL helps facilitates community development and empowerment based on local languages through several activities. These activities are surveys, literacy, community development, health, computers, appropriate media, and local language translation.</p> <p>The language survey has found that there are 271 vernacular languages in Papua, where 269 languages are active, or currently being used, one language is near extinction, and one local language is already extinct.</p> <p>Many supporting facilities are needed to support the local community development programs, especially for those who live in remote areas. Local community must have a chance to learn new skills mentioned above to be able to interact with the outside world. Vocational training is a way to help local community to master new skills. The Papua Training Center aims to provide a center for capacity development for local community. Courses available at Papua Training Center is computer training (hardware diagnostic and repair, MS Windows application, analyze language data), language trainings, etc.</p> <p>At the Papua Training Center, SIL also develops appropriate media (non printable materials) as a mean to disseminate information and improve people's knowledge and skills. Non printable materials are very useful for those who can not read, as many of the communities in Papua are oral communities. SIL also train facilitators to develop and use appropriate media services to teach community development techniques.</p>	



<p><b>Working sector:</b></p> <p><input type="checkbox"/> 1-1 Food &amp; Nutrition Intake</p> <p><input type="checkbox"/> 1-2 Health</p> <p><input type="checkbox"/> 1-3 Education</p> <p><input type="checkbox"/> 1-4 Local Economy</p> <p><input type="checkbox"/> 1-5 Gender Equality</p> <p><input type="checkbox"/> 1-6 Basic Infrastructure</p> <p><input type="checkbox"/> 1-7 Village level Capacity Development</p> <p><input type="checkbox"/> 2-0 Sustainable Environment management</p> <p><input checked="" type="checkbox"/> 3-0 Vocational Training / Human Resource Development</p> <p><input checked="" type="checkbox"/> 4-0 Other</p> <p>Vocational Training Appropriate Media Services</p>	<p><b>Location:</b></p> <p><input type="checkbox"/> Province</p> <p><input checked="" type="checkbox"/> Kabupaten</p> <p><input type="checkbox"/> Kota</p> <p><input checked="" type="checkbox"/> District (Kecamatan)</p> <p><input type="checkbox"/> Village</p> <table border="1" style="width: 100%; border-collapse: collapse; margin-top: 10px;"> <tr> <td style="width: 30%;"><b>Province</b></td> <td>West Papua</td> </tr> <tr> <td><b>Kabupaten</b></td> <td>1. Sorong Selatan 2. Manokwari</td> </tr> <tr> <td><b>Kota</b></td> <td></td> </tr> <tr> <td><b>District (Kecamatan)</b></td> <td></td> </tr> <tr> <td><b>Village</b></td> <td></td> </tr> </table>	<b>Province</b>	West Papua	<b>Kabupaten</b>	1. Sorong Selatan 2. Manokwari	<b>Kota</b>		<b>District (Kecamatan)</b>		<b>Village</b>	
<b>Province</b>	West Papua										
<b>Kabupaten</b>	1. Sorong Selatan 2. Manokwari										
<b>Kota</b>											
<b>District (Kecamatan)</b>											
<b>Village</b>											

**Plan, methods and mechanism of the implementation:**

Expectantly the informal education and training which are provided by SIL will be implemented as follows:

- Trainings on survey techniques, language analysis, cross culture communication and basic principles of translation.
- English Courses
- Computer Courses
- Training on community health
- Training on literacy projects.
- Training on community development
- Training on Appropriate Media Services
- Development of Appropriate Media Services (VCDs on Malaria, fever etc) in local languages.

Simple Indonesian or Papuan Malay is used in every course so that the transfer of technology will be easy to understand which then invites participants to interact and become pro-active in each course given.

**Lessons learn and progress of the project:**

The community development projects with language and cultural approach will have a greater chance to succeed and become sustainable with the support from local community through their involvement and wanting to better themselves.

Such trainings also support each participant's occupation. Each course is designed in such a way that participants from different areas in Papua with different cultures, varying levels of education can take the same course at the same time.

Visual media is also effective to disseminate information. VCDs on HIV/AIDS information in Kemtuik and Una languages are very welcomed by illiterate adult. For those who are learning to read, they can follow the stories in their health books. Now SIL has VCD on HIV/AIDS, Avian Influenza. The Avian Influenza VCD is being translated to local languages.



Figure 1. Learner in computer courses



Figure 2. The graduates



Figure 3. Training Center



Figure 4. Training Center



Figure 5. Rachfri Kirihio, SIL Head of Literacy Department presents SIL activities in Papua



Figure 6. Jacqueline Menanti is explaining the activities of SIL Survey Department

Figure 7. Drg. Lopez is showing the equipments for community health services in remote areas.



Figure 8. SIL Head of Appropriate Media Services Department is explaining the purpose of Appropriate Media Services.

Figure 9. The display of Community Development Department





Project Information Sheet

**Cultural (Language) Projects in Papua and West Papua Province**

Contributed by SIL

<p><b>Implementing Partner</b></p> <p>SIL INTERNATIONAL                  P.O. BOX 1, SENTANI 99352, PAPUA                  Tel. 593 971, Fax. 593 974                  E-mail: <a href="mailto:mike_eastwood@sil.org">mike_eastwood@sil.org</a></p>											
<p><b>Funding</b></p> <p>Private donation</p>	<p><b>Implementing Partners</b></p> <p>Village Community Empowerment Agency                  Social Welfare Department – Papua                  Province</p>										
<p><b>Project Description:</b></p> <p>The goals of Language Project in Papua are:</p> <ul style="list-style-type: none"> <li>❖ To identify and document local languages and its boundaries in Papua.</li> <li>❖ To preserve the local languages and cultures</li> <li>❖ To increase the use of local languages in each area.</li> <li>❖ To equip those who have a burden to preserve the local heritage with basic translation techniques and writing skills.</li> </ul> <p>Activities:</p> <ul style="list-style-type: none"> <li>❖ Languages surveys</li> <li>❖ Mother tongue translation workshops</li> <li>❖ Writers workshop</li> <li>❖ Dictionary workshop</li> </ul>											
<p><b>Working sector:</b></p> <p><input type="checkbox"/> 1-1 Food &amp; Nutrition Intake</p> <p><input type="checkbox"/> 1-2 Health</p> <p><input type="checkbox"/> 1-3 Education</p> <p><input type="checkbox"/> 1-4 Local Economy</p> <p><input type="checkbox"/> 1-5 Gender Equality</p> <p><input type="checkbox"/> 1-6 Basic Infrastructure</p> <p><input type="checkbox"/> 1-7 Village level Capacity Development</p> <p><input type="checkbox"/> 2-0 Sustainable Environment management</p> <p><input type="checkbox"/> 3-0 Vocational Training / Human Resource Development</p> <p><input checked="" type="checkbox"/> 4-0 Other: Language</p>	<p><b>Location:</b></p> <p><input type="checkbox"/> Province:</p> <p><input type="checkbox"/> Kabupaten:</p> <p><input type="checkbox"/> Kota:</p> <p><input checked="" type="checkbox"/> District (Kecamatan):</p> <p><input checked="" type="checkbox"/> Village/Desa:</p> <table border="1"> <tr> <td><b>Province</b></td> <td>West Papua</td> </tr> <tr> <td><b>Kabupaten</b></td> <td>1. Sorong, 2. Sorong Selatan 3. Manokwari</td> </tr> <tr> <td><b>Kota</b></td> <td></td> </tr> <tr> <td><b>District (Kecamatan)</b></td> <td></td> </tr> <tr> <td><b>Village</b></td> <td></td> </tr> </table>	<b>Province</b>	West Papua	<b>Kabupaten</b>	1. Sorong, 2. Sorong Selatan 3. Manokwari	<b>Kota</b>		<b>District (Kecamatan)</b>		<b>Village</b>	
<b>Province</b>	West Papua										
<b>Kabupaten</b>	1. Sorong, 2. Sorong Selatan 3. Manokwari										
<b>Kota</b>											
<b>District (Kecamatan)</b>											
<b>Village</b>											



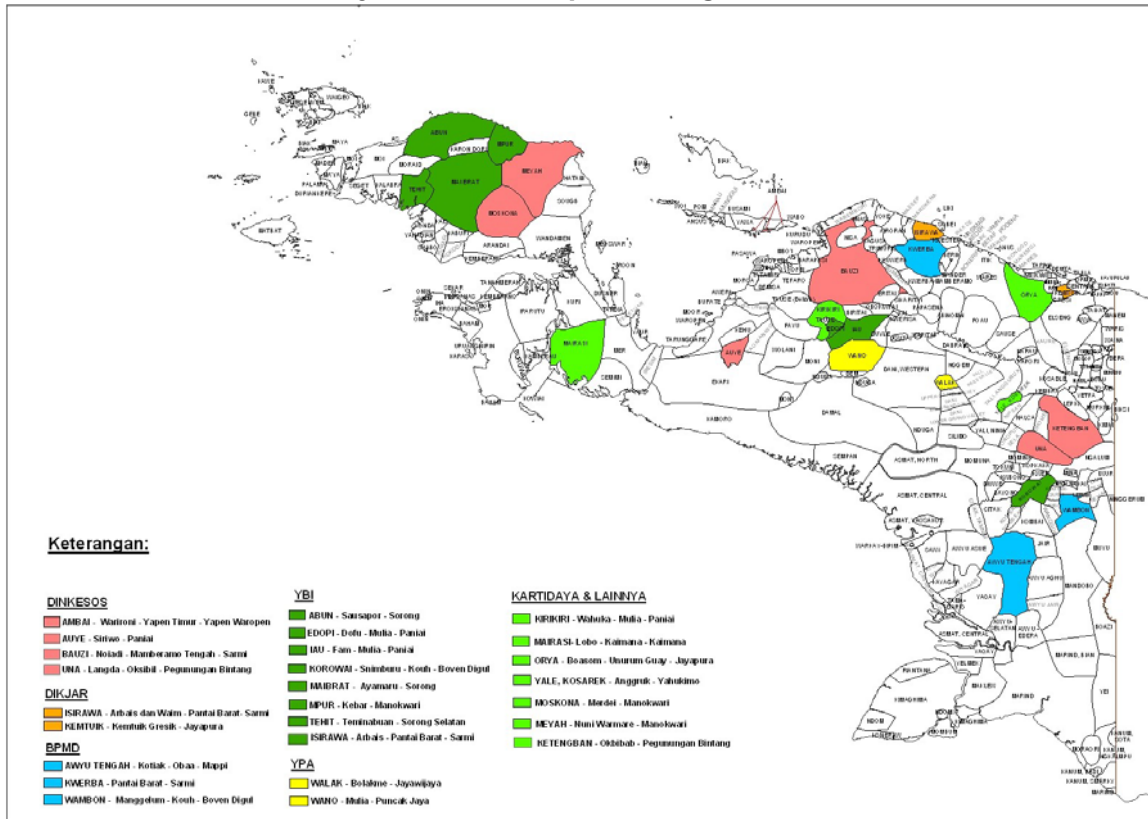
	<p>Affects most of the locations where SIL works. See the map at bottom of document</p>
<p><b>Plan, methods and mechanism of the implementation:</b></p> <ul style="list-style-type: none"><li>• Collecting the vocabularies of local languages</li><li>• Formal and informal interview on the situation of local languages and certain language area boundaries.</li><li>• Through this program, translators can help their own communities by preserving their heritage, transfer of technology.</li><li>• Office space and equipment has been set up for them at the Training Center.</li></ul>	
<p><b>Lessons learn and progress of the project:</b></p> <p>The implementation of local languages survey benefits the program planning and team assignment. It makes the program planning more appropriate to local needs.</p>	



Figure 1. Participants of Mother Tongue Translation Workshop



### SIL Work Area (by coordination partners-government and NGOs)





Project Information Sheet

***Bird's Head Governance Initiative***

<p><b>Implementing Partner</b></p> <p>Local Governance Support Program (LGSP)                  Jakarta Stock Exchange Building Tower I, 29th Floor                  Jl. Jend. Sudirman Kav. 52-53 Jakarta 12190                  Tel: +62-21 5151755 Fax: +62-21 5151752</p> <p>Point of Contact:                  Mr. Geoff Swenson                  LGSP Field Operations Director  <a href="mailto:gswenson@lgsp.or.id">gswenson@lgsp.or.id</a></p>											
<p><b>Funding</b></p> <p>Amount: \$3,000,000                  Sources: Yayasan BP (\$1.5 million) and USAID DDG (\$1.5 million)</p>	<p><b>Counterparty</b></p> <p>Candidate local government partners include Kota Sorong, Kabupaten Sorong Selatan, Kabupaten Manokwari, Kabupaten Fakfak, and Kabupaten Kaimana.</p>										
<p><b>Project Description</b></p> <p>The Bird's Head Governance initiative supports the development and capacity building of institutions of local government and local councils. In addition to strengthening local governance as a priority in its own right, the program aims to build local government capacity to ensure improved revenue management, to facilitate community driven development, and to promote more equitable growth in the Bird's Head region.</p>											
<p><b>Working sector:</b></p> <p><input type="checkbox"/> 1-1 Food &amp; Nutrition Intake  <input type="checkbox"/> 1-2 Health  <input type="checkbox"/> 1-3 Education  <input type="checkbox"/> 1-4 Local Economy  <input type="checkbox"/> 1-5 Gender Equality  <input type="checkbox"/> 1-6 Basic Infrastructure  <input type="checkbox"/> 1-7 Village level Capacity Development  <input type="checkbox"/> 2-0 Sustainable Environment Management  <input type="checkbox"/> 3-0 Vocational Training / Human Resource Development  <input checked="" type="checkbox"/> 4-0 Other</p>	<p><b>Location:</b></p> <p><input type="checkbox"/> Province:  <input checked="" type="checkbox"/> Regency:  <input type="checkbox"/> Municipality:  <input type="checkbox"/> District (Kecamatan):  <input type="checkbox"/> Village:</p> <table border="1"> <tr> <td><b>Province</b></td> <td>West Papua</td> </tr> <tr> <td><b>Regency</b></td> <td>Kabupaten Sorong Selatan, Kabupaten Manokwari, Kabupaten Fakfak, and Kabupaten Kaimana.</td> </tr> <tr> <td><b>Municipality</b></td> <td>Kota Sorong</td> </tr> <tr> <td><b>District (Kecamatan)</b></td> <td></td> </tr> <tr> <td><b>Village</b></td> <td></td> </tr> </table>	<b>Province</b>	West Papua	<b>Regency</b>	Kabupaten Sorong Selatan, Kabupaten Manokwari, Kabupaten Fakfak, and Kabupaten Kaimana.	<b>Municipality</b>	Kota Sorong	<b>District (Kecamatan)</b>		<b>Village</b>	
<b>Province</b>	West Papua										
<b>Regency</b>	Kabupaten Sorong Selatan, Kabupaten Manokwari, Kabupaten Fakfak, and Kabupaten Kaimana.										
<b>Municipality</b>	Kota Sorong										
<b>District (Kecamatan)</b>											
<b>Village</b>											



#### **Plan, methods and mechanism of the implementation:**

LGSP assistance reflects the distinct character of Papuan society, the continuing importance of tribal and traditional (*adat*) communities, and the governance arrangements put in place in Papua dan West Papua by the Special Autonomy Law for Papua (Law 21/2001).

LGSP offers a combination of technical assistance, capacity building, training, tools, publications and information to local governments while promoting greater interaction between citizens and their local government. The assistance is geared toward a menu of critical planning and budgeting assistance, financial management improvement, local council development, and citizen participation, but will be tailored to needs and priorities specific to the participating local governments.

LGSP works in collaboration with BP Tangguh Project's partner Yayasan Inovasi Pemerintahan Daerah (YIPD) who has been tasked by BP to provide technical assistance and capacity building support to the newly established Kabupaten Teluk Bintuni.

#### **Lessons learn and progress of the project:**

This project has just started, so there are no lessons learned to be summarized yet. The base line survey is on-going now, and project office is being set up in Sorong



Project Information Sheet

**Democracy and Decentralized Governance - The Bird's Head Governance Initiative**

<p><b>Implementing Partner</b></p> <p>Research Triangle Institute                  Jakarta Stock Exchange Building Tower I, 29th Floor                  Jl. Jend. Sudirman Kav. 52-53 Jakarta 12190                  Tel: +62-21 5151755 Fax: +62-21 5151752</p> <p>Point of Contact:                  Mr. Geoff Swenson                  LGSP Field Operations Director  <a href="mailto:gswenson@lgsp.or.id">gswenson@lgsp.or.id</a></p>											
<p><b>Funding</b></p> <p>Regional funding levels are not available</p>	<p><b>Implementing Partners</b></p> <p>Potential local government partners include Kota Sorong, Kabupaten Sorong Selatan, Kabupaten Manokwari, Kabupaten Fakfak, and Kabupaten Kaimana.</p>										
<p><b>Project Description</b></p> <p>The Bird's Head Governance initiative supports the development and capacity building of institutions of local government and local councils. In addition to strengthening local governance as a priority in its own right, the program aims to build local government capacity to ensure improved revenue management, to facilitate community driven development, and to promote more equitable growth in the Bird's Head region. The program is for the period 2006 – 2009. This program is implemented in partnership with British Petroleum through a multi-year public – private alliance.</p>											
<p><b>Working sector:</b></p> <p><input type="checkbox"/> 1-1 Food &amp; Nutrition Intake  <input type="checkbox"/> 1-2 Health  <input type="checkbox"/> 1-3 Education  <input type="checkbox"/> 1-4 Local Economy  <input type="checkbox"/> 1-5 Gender Equality  <input type="checkbox"/> 1-6 Basic Infrastructure  <input type="checkbox"/> 1-7 Village level Capacity Development  <input type="checkbox"/> 2-0 Sustainable Environmental Management  <input type="checkbox"/> 3-0 Vocational Training / Human Resource Development  <input checked="" type="checkbox"/> 4-0 Other: Local Good Governance</p>	<p><b>Location:</b></p> <p><input type="checkbox"/> Province:  <input checked="" type="checkbox"/> Regency:  <input checked="" type="checkbox"/> Municipality:  <input type="checkbox"/> District (Kecamatan):  <input type="checkbox"/> Village:</p> <table border="1"> <tr> <td><b>Province</b></td> <td>West Papua</td> </tr> <tr> <td><b>Regency</b></td> <td>Sorong Selatan, Manokwari, Fakfak, and Kaimana.</td> </tr> <tr> <td><b>Municipality</b></td> <td>Sorong</td> </tr> <tr> <td><b>District</b></td> <td></td> </tr> <tr> <td><b>Village</b></td> <td></td> </tr> </table>	<b>Province</b>	West Papua	<b>Regency</b>	Sorong Selatan, Manokwari, Fakfak, and Kaimana.	<b>Municipality</b>	Sorong	<b>District</b>		<b>Village</b>	
<b>Province</b>	West Papua										
<b>Regency</b>	Sorong Selatan, Manokwari, Fakfak, and Kaimana.										
<b>Municipality</b>	Sorong										
<b>District</b>											
<b>Village</b>											

**Plan, methods and mechanism of the implementation:**

LGSP offers a combination of technical assistance, capacity building, training, tools, publications and information to local governments while promoting greater interaction between citizens and their local government. The assistance is geared toward a menu of critical planning and budgeting assistance, financial management improvement, local council development, and citizen participation, but will be tailored to needs and priorities specific to the participating local governments.

**Lessons learn and progress of the project:**

New program.



Project Information Sheet  
**Indonesia Regional Elections Program**

<p><b>Implementing Agency</b></p> <p>The Asia Foundation                  Jl Adityawarman No. 40, Jakarta                  Phone: 021 72788424                  Fax: 021 7203123</p> <p>Jeremy Gross, Manager Elections Program</p>	<p><b>Project Duration:</b>                  From : May 2005                  To : June 2009</p>										
<p><b>Funding</b></p> <p>N/A</p>	<p><b>Implementing Partner</b></p> <p>Jaringan Pendidikan Pemilih untuk Rakyat (JPPR)</p>										
<p><b>Project Description</b></p> <p>Support JPPR to effectively monitor and provides voter education in local elections all across Indonesia.</p>											
<p><b>Working sector:</b></p> <p><input type="checkbox"/> 1-1 Food &amp; Nutrition Intake  <input type="checkbox"/> 1-2 Health (HIV/AIDS)  <input type="checkbox"/> 1-3 Education  <input type="checkbox"/> 1-4 Local Economy  <input type="checkbox"/> 1-5 Gender Equality  <input type="checkbox"/> 1-6 Basic Infrastructure  <input type="checkbox"/> 1-7 Village level Capacity Development  <input type="checkbox"/> 2-0 Sustainable Environment management  <input type="checkbox"/> 3-0 Vocational Training / Human Resource Development  <input checked="" type="checkbox"/> 8-0 Other</p>	<p><b>Location:</b></p> <p><input checked="" type="checkbox"/> Province  <input checked="" type="checkbox"/> Kabupaten  <input checked="" type="checkbox"/> Kota  <input type="checkbox"/> District(Kecamatan)  <input type="checkbox"/> Village</p> <table border="1" data-bbox="847 1391 1321 1637"> <tr> <td><b>Province</b></td> <td>Papua and Papua Barat</td> </tr> <tr> <td><b>Kabupaten</b></td> <td></td> </tr> <tr> <td><b>Kota</b></td> <td></td> </tr> <tr> <td><b>District (Kecamatan)</b></td> <td></td> </tr> <tr> <td><b>Village</b></td> <td></td> </tr> </table>	<b>Province</b>	Papua and Papua Barat	<b>Kabupaten</b>		<b>Kota</b>		<b>District (Kecamatan)</b>		<b>Village</b>	
<b>Province</b>	Papua and Papua Barat										
<b>Kabupaten</b>											
<b>Kota</b>											
<b>District (Kecamatan)</b>											
<b>Village</b>											
<p><b>Plan, methods and mechanism of the implementation:</b>                  JPPR will conduct an annual mapping exercise to identify which local elections will be monitored or covered in the program. Then JPPR will deploy its volunteer to monitor the elections or prepare voter education program.                  There is no guarantee that every single elections, including in Papua and Papua Barat, will covered.</p>											
<p><b>Lessons learn and progress of the project:</b></p>											



Project Information Sheet

***Support the Formulation of RAPERDASUS Adat Court and Strengthen Adat Institutions in Five Model Districts in Papua and West Papua***

<p><b>Implementing Agency</b></p> <p>The Partnership for Governance Reform in Indonesia          Address:          Multi Donor Office          Gedung BPID 2<sup>nd</sup> Floor          Phone: 0967 – 537065          Fax: 0967 - 536754</p>	<p><b>Project Duration:</b></p> <p>From: December 2007          To : December 2008</p>
<p><b>Funding</b></p> <p>IDR. 1,767,832,000.-          Funded by SIDA</p>	<p><b>Implementing Partner</b></p> <p>A team work comprises of representatives from Kejaksaan Tinggi Province Papua, Pengadilan Tinggi Province Papua, Dewan Perwakilan Rakyat Papua, POLDA Papua, Universitas Cendrawasih</p>
<p><b>Project Description:</b></p> <p>The purpose of Special Autonomy Law for Papua Province is to realize justice, uphold law supremacy, encourage better respect to human rights, and accelerate economic development, and increase prosperity and development of Papuan people, in order to ensure equality among provinces in Indonesia. Legal reform mandated by Special Autonomy can only be executed by ensuring affordable access to justice for native Papuan that is currently provided by adat court. Existence of adat court should not be seen as undermining of the state court legitimacy but as enrichment of the Indonesian law system.</p> <p>Papua Special Autonomy Law released in 2001 stated that indigenous people of Papua have built awareness to have peace and constitutionally fought for the admission of basic rights and dispute resolution in addressing violation of Papuan’s human right.</p> <p>In supporting the implementation of Papua Special Autonomy Law, Papua government ought to establish legal institutions that attend the issue of native Papuan’s basic right, i.e. Papuan People’s Assembly (MRP), Truth and Reconciliation Commission (KKR), Adat Court, and human right court. PERDASUS of Adat court should be formulated in accordance to Papua Government’s priorities in establishing Adat Court institution.</p> <p>The present project seeks to enable the adat law to be fostered by Papuan communities. The selection of districts in this project is based on the distribution of adat law community (adat hierarchy structures in Papua), existence of active practice of adat court and high social conflicts in that area.</p> <p>The purpose of protecting and developing indigenous Papuans as stated in the Papua Autonomy Law number 21/ 2001 should be seen in the perspective of strengthening the existence of Papuan law as strongly linked to their history, customs and environment. The protection of the existence of Papuan law, traditional and culture means the protection of Papua land. Papua land has variety of cultures so it needs Special Area</p>	



Regulations/PERDASUS including a PERDASUS of Adat Court as a means to protect and strengthen the culture of native Papuan.

**Main Activities**

PERDASUS Adat Court in Papua

1. Series of lobbying PEMDA Province Law Bureau, Governor, and Regional Parliament (DPRP)
2. Selection process of the expert team
3. Series of FGD and workshops to revise academic draft. Series of consultations with law enforcement institutions, experts, legislative and executive body
4. Series of public discussion on the content of the academic draft
5. Comparative study of other adat area in Indonesia to incorporate best practices in the project design
6. Assessment of adat institutions in five districts representing seven adat areas in Papua

Draft PERDASUS Adat Court accepted by Governor and officially submitted to parliament

7. Session of draft submission to PEMDA Province and Governor
8. Hearing session at DPRP on draft submission

Strengthening adat court in five selected districts:

9. Socialisation and identification of Adat court PERDASUS in five selected districts
10. Codification of Adat Law in five selection districts
11. Training of Trainers for Adat Court implementer
12. Advocacy to MRP
13. Workshop on Adat Court Implementation Mechanism for Law Force Institutions

**Working sector:**

- 1-1 Food & Nutrition Intake
- 1-2 Health (HIV/AIDS)
- 1-3 Education
- 1-4 Local Economy
- 1-5 Gender Equality
- 1-6 Basic Infrastructure
- 1-7 Village level Capacity Development
- 2-0 Sustainable Environment management
- 3-0 Vocational Training / Human Resource Development
- 4-0 Other

**Location:**

- Province
- Kabupaten
- Kota
- District (Kecamatan)
- Village

<b>Province</b>	West Papua
<b>Kabupaten</b>	Teluk Bintuni
<b>Kota</b>	
<b>District (Kecamatan)</b>	
<b>Village</b>	

**Plan, methods and mechanism of the implementation:**

Project will be implemented in Papua and West Provinces and will be implemented in a close collaboration with law enforcement institutions.

**Lessons learn and progress of the project:**

The project has just started this month, the progress will be shared soon.

## **Matrix of Implementing Agencies – Donor Agencies in West Papua Province**

No	Regency/ Municipality	Food and Nutrition Intake	Health	Education	Local Economy Development	Gender Mainstreaming
1	Kab Sorong		<ul style="list-style-type: none"> <li>▪ GRM, Burnet – AusAID</li> <li>▪ Global Fund, Local and National Government</li> <li>▪ NLR</li> <li>▪ UNICEF, Government of Netherlands</li> <li>▪ UNICEF, USAID, GFATM</li> <li>▪ UNICEF, AusAID</li> <li>▪ FHI-USAID</li> <li>▪ KNCV-USAID</li> <li>▪ UNICEF, USAID</li> </ul>	UNICEF, UNESCO, NZAID		
2	Kab Sorong Selatan		<ul style="list-style-type: none"> <li>▪ Global Fund, Local and National Government</li> <li>▪ NLR</li> </ul>	<ul style="list-style-type: none"> <li>▪ SIL- Pemerintah Daerah, Oikonomos, CIDA, UNDP</li> <li>▪ EDC, RTI – USAID</li> <li>▪ World Bank, IDA, IBRD, Government of Netherlands</li> </ul>		
3	Kab Raja Ampat	UNDP, Government of Netherlands, NZAID	<ul style="list-style-type: none"> <li>▪ GRM, Burnet – AusAID</li> <li>▪ UNDP, Government of Netherlands, NZAID</li> </ul>	<ul style="list-style-type: none"> <li>▪ World Bank, IDA, IBRD, Government of Netherlands</li> <li>▪ UNDP, Government of Netherlands, NZAID</li> </ul>	UNDP, Government of Netherlands, NZAID	UNDP, Government of Netherlands, NZAID
4	Kota Sorong		<ul style="list-style-type: none"> <li>▪ GRM, Burnet – AusAID</li> <li>▪ Global Fund, Local and National Government</li> <li>▪ NLR</li> <li>▪ UNICEF, Government of Netherlands</li> <li>▪ FHI-USAID</li> </ul>	EDC, RTI - USAID		
5	Kab Manokwari		<ul style="list-style-type: none"> <li>▪ GRM, Burnet – AusAID</li> <li>▪ Global Fund, Local and National Government</li> <li>▪ NLR</li> <li>▪ UNICEF, Government of Netherlands</li> <li>▪ UNICEF, USAID, GFATM</li> <li>▪ UNICEF, AusAID</li> <li>▪ FHI-USAID</li> <li>▪ KNCV-USAID</li> <li>▪ UNICEF, USAID</li> </ul>	<ul style="list-style-type: none"> <li>▪ SIL-Pemerintah Daerah, Oikonomos, CIDA, UNDP</li> <li>▪ UNICEF, UNESCO, NZAID</li> <li>▪ EDC, RTI - USAID</li> </ul>	ILO-Government of Japan	ILO-Government of Japan
6	Kab Teluk Bintuni		<ul style="list-style-type: none"> <li>▪ GRM, Burnet – AusAID</li> <li>▪ NLR</li> <li>▪ FHI-USAID</li> </ul>			
7	Kab Teluk Wondama		NLR			
8	Kab Fak Fak	UNDP, Government of Netherlands, NZAID	<ul style="list-style-type: none"> <li>▪ Global Fund, Local and National Government</li> <li>▪ NLR</li> <li>▪ FHI-USAID</li> <li>▪ UNDP, Government of Netherlands, NZAID</li> </ul>	UNDP, Government of Netherlands, NZAID	UNDP, Government of Netherlands, NZAID	UNDP, Government of Netherlands, NZAID
9	Kab Kaimana		<ul style="list-style-type: none"> <li>▪ NLR</li> <li>▪ FHI-USAID</li> </ul>			
	Provincial Level	UNDP, Government of Netherlands, NZAID	<ul style="list-style-type: none"> <li>▪ GRM, Burnet – AusAID</li> <li>▪ Global Fund, Local and National Government</li> <li>▪ UNICEF, Government of Netherlands</li> </ul>	<ul style="list-style-type: none"> <li>▪ UNICEF, UNESCO, NZAID</li> <li>▪ World Bank, IDA, IBRD,</li> </ul>	UNDP, Government of Netherlands, NZAID	UNDP, Government of Netherlands, NZAID

No	Regency/ Municipality	Food and Nutrition Intake	Health	Education	Local Economy Development	Gender Mainstreaming
			<ul style="list-style-type: none"> <li>▪ UNICEF, USAID, GFATM</li> <li>▪ UNICEF, AusAID</li> <li>▪ FHI-USAID</li> <li>▪ WHO, FHI, Pemerintah Daerah</li> <li>▪ UNDP, Government of Netherlands, NZAID</li> </ul>	Government of Netherlands <ul style="list-style-type: none"> <li>▪ UNDP, Government of Netherlands, NZAID</li> </ul>		
	National Level					

No	Regency/ Municipality	Basic Infrastructure	Village Level Capacity Development	Sustainable Environment Management	Vocational Training/Human Resources Development	Other
1	Kab Sorong	UNICEF	UNDP, BP	UNDP, BP	UNDP, BP	SIL
2	Kab Sorong Selatan	UNICEF	UNDP, BP	UNDP, BP	<ul style="list-style-type: none"> <li>▪ UNDP, BP</li> <li>▪ SIL</li> </ul>	<ul style="list-style-type: none"> <li>▪ SIL</li> <li>▪ LGSP-USAID</li> <li>▪ RTI-USAID</li> </ul>
3	Kab Raja Ampat	<ul style="list-style-type: none"> <li>▪ UNICEF</li> <li>▪ UNDP, Government of Netherlands, NZAID</li> </ul>	<ul style="list-style-type: none"> <li>▪ UNDP, BP</li> <li>▪ UNDP, Government of Netherlands, NZAID</li> </ul>	UNDP, BP	UNDP, BP	
4	Kota Sorong		UNDP, BP	UNDP, BP	UNDP, BP	<ul style="list-style-type: none"> <li>▪ LGSP-USAID</li> <li>▪ RTI-USAID</li> </ul>
5	Kab Manokwari		UNDP, BP	<ul style="list-style-type: none"> <li>▪ UNDP, BP</li> <li>▪ ACIAR - AusAID</li> </ul>	<ul style="list-style-type: none"> <li>▪ ILO-Government of Japan</li> <li>▪ UNDP, BP</li> <li>▪ SIL</li> </ul>	<ul style="list-style-type: none"> <li>▪ SIL</li> <li>▪ LGSP-USAID</li> <li>▪ RTI-USAID</li> </ul>
6	Kab Teluk Bintuni	UNICEF	UNDP, BP	UNDP, BP	UNDP, BP	Partnership-SIDA
7	Kab Teluk Wondama		UNDP, BP	UNDP, BP	UNDP, BP	
8	Kab Fak Fak	UNDP, Government of Netherlands, NZAID	<ul style="list-style-type: none"> <li>▪ UNDP, BP</li> <li>▪ UNDP</li> <li>▪ UNDP, Government of Netherlands, NZAID</li> </ul>	UNDP, BP	UNDP, BP	<ul style="list-style-type: none"> <li>▪ UNDP</li> <li>▪ LGSP-USAID</li> <li>▪ RTI-USAID</li> </ul>
9	Kab Kaimana					<ul style="list-style-type: none"> <li>▪ LGSP-USAID</li> <li>▪ RTI-USAID</li> </ul>
	Provincial Level	UNICEF UNDP, Government of Netherlands, NZAID	<ul style="list-style-type: none"> <li>▪ UNDP, BP</li> <li>▪ UNDP, Government of Netherlands, NZAID</li> </ul>	UNDP, BP	UNDP, BP	<ul style="list-style-type: none"> <li>▪ TAF-AusAID</li> <li>▪ Partnership-SIDA</li> </ul>
	National Level					