



NUMBER OF EARTHQUAKE VICTIM BANTUL DISTRICT, YOGYAKARTA

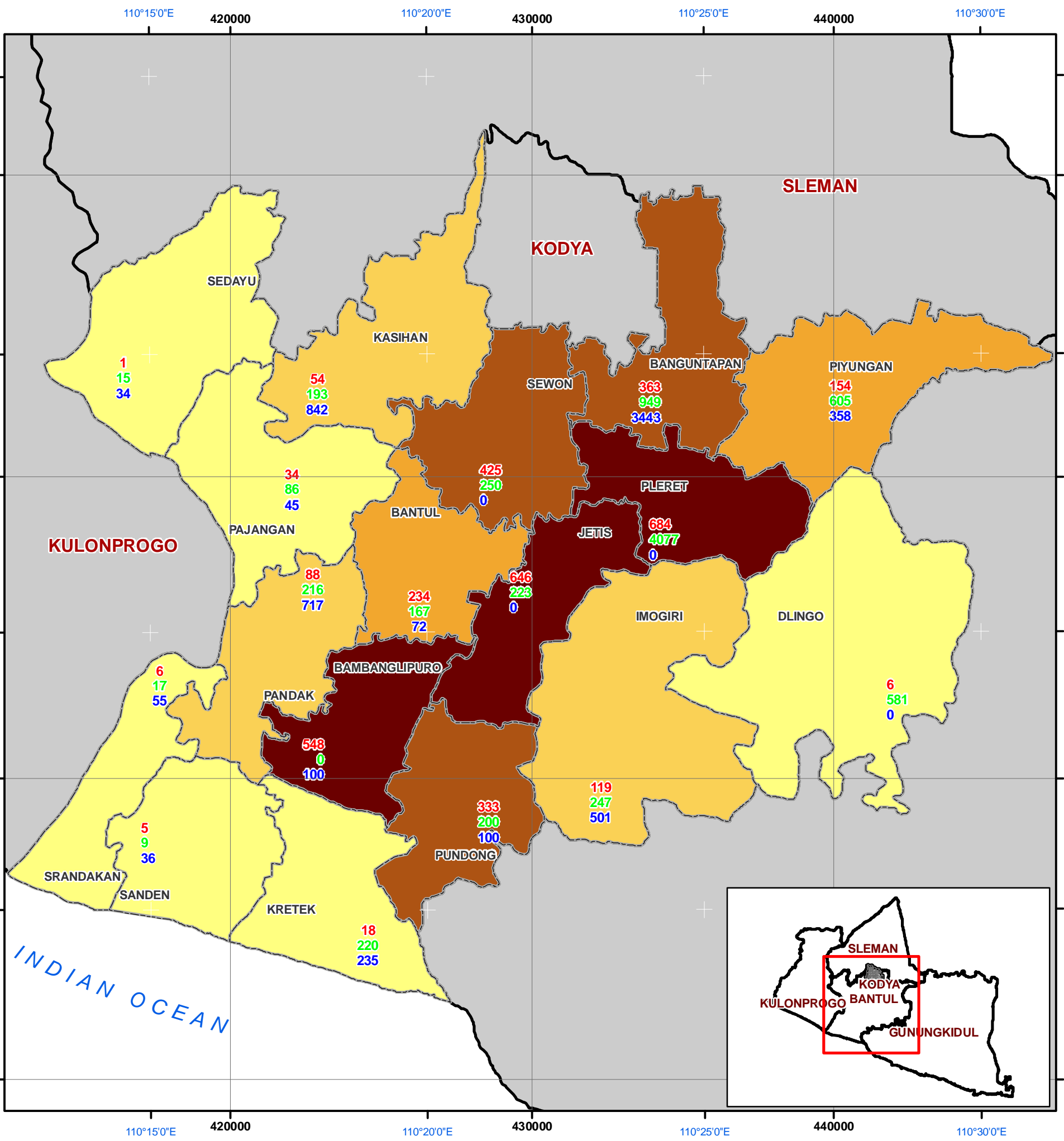
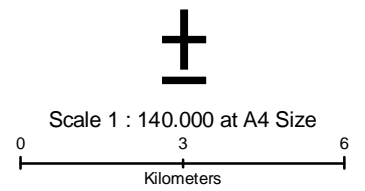
Legend

- Sub District Boundry
- District Boundary

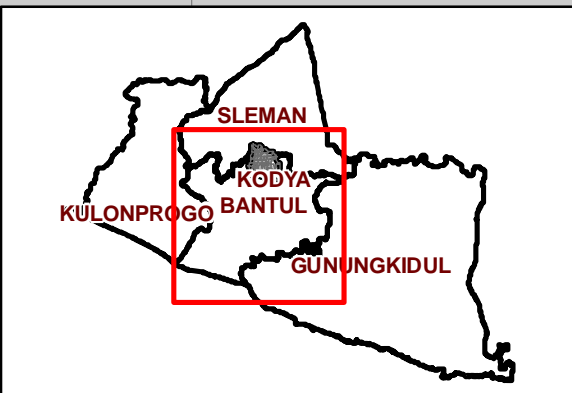
Number of People Died

- 1 - 35
- 36 - 120
- 121 - 250
- 251 - 450
- 451 - 700

- 100 Number of People Died
- 100 Number of People Heavy Injured
- 100 Number of People Light Injured



Sub District	Death	Heavily Injured	Slightly Injured
Bantul	234	167	72
Sedayu	1	15	34
Kasihan	54	193	842
Sewon	425	250	0
Bangun Tapan	363	949	3443
Pleret	684	4077	0
Piyungan	154	605	358
Jetis	646	223	0
Imogiri	119	247	501
Dlingo	6	581	0
Pundong	333	200	508
Kretek	18	130	100
Bambang Lipuro	548	0	100
Sanden	2	25	7
Pandak	88	216	717
Srandakan	5	9	36
Pajangan	34	86	45
Total	3779	8315	6969



The boundaries and names depicted on these maps do not imply any official acceptance or endorsement by UN

Data Source : SATKORLAK Yogyakarta, 30 May 2006
Map Produced : 1st June 2006