



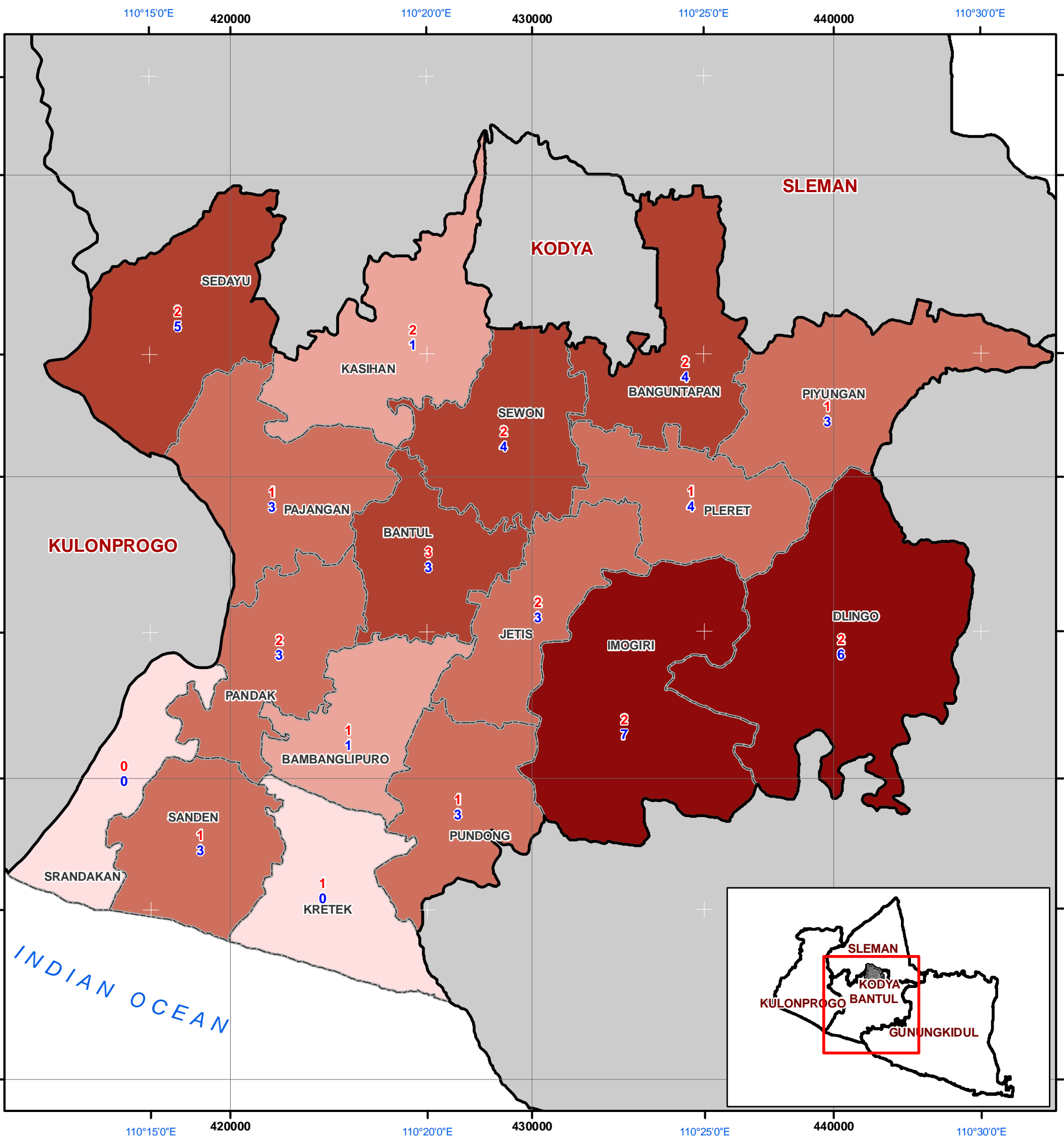
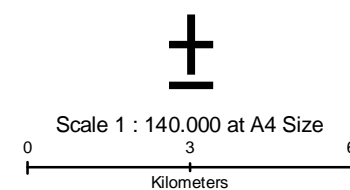
NUMBER OF HEALTH FACILITIES DAMAGED BANTUL DISTRICT, YOGYAKARTA

Legend

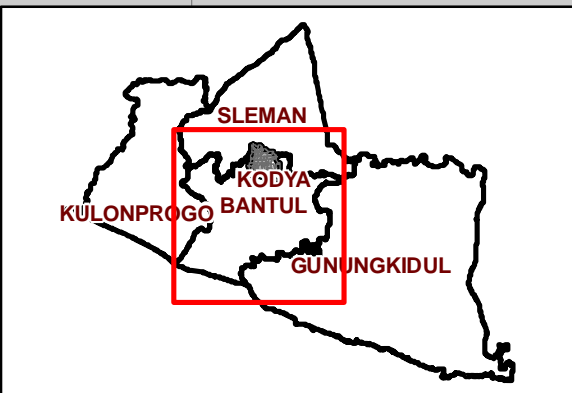
- District Boundary
- Sub District Boundry

Health Facilities Damaged

- 0 - 1
 - 2 - 3
 - 4 - 5
 - 6 - 7
 - 8 - 9
- 100 Number of Puskesmas Damaged
100 Number of PUSTU Damaged



NO	Puskesmas	Puskesmas Condition			PUSTU Condition		
		Heavily	Medium	Lightly	Heavily	Medium	Lightly
1	BANGUNTAPAN I (245 m2)	1	-	-	-	3	-
2	BANGUNTAPAN II (270 m2)	-	1	-	1	-	-
3	BANTUL I (248 m2)	1	-	-	-	-	-
4	BANTUL II 160 m2)	-	-	1	1	-	2
5	BB LIPURO (425 m2)	1	-	-	1	-	-
6	DLINGO I (488 m2)	1	-	-	1	-	1
7	DLINGO II (230 m2)	1	-	-	2	-	2
8	IMOGIRI I (554 m2)	1	-	-	2	1	-
9	IMOGIRI II (200 m2)	1	-	-	3	1	-
10	JETIS I (460 m2)	1	-	-	2	-	-
11	JETIS II (205 m2)	1	-	-	1	-	-
12	KASIHAN I (180 m2)	-	-	1	-	-	-
13	KASIHAN II (160 m2)	-	-	1	-	-	1
14	KRETEK (722 m2)	-	1	-	-	-	-
15	PAJANGAN (460 m2)	1	-	-	2	1	-
16	PANDAK I (460 m2)	1	-	-	-	2	-
17	PANDAK II (155 m2)	-	1	-	1	-	-
18	PIYUNGAN (625 m2)	1	-	-	3	-	-
19	PLERET (505 m2)	1	-	-	4	-	1
20	PUNDONG (475 m2)	1	-	-	2	-	1
21	SANDEN (706 m2)	-	-	1	1	2	-
22	SEDAYU I (250 m2)	-	-	1	1	-	1
23	SEDAYU II (180 m2)	-	-	1	-	-	3
24	SEWON I (460 m2)	-	1	-	1	-	1
25	SEWON II (400 m2)	1	-	-	-	2	-
26	SRANDAKAN (545 m2)	-	-	1	1	1	-
27	RSU BTL (800 m2)	-	-	1	-	-	-
28	DINAS (1470 m2)	1	-	-	-	-	-
Total		16	4	8	30	13	13
Total Number		28			56		



The boundaries and names depicted on these maps do not imply any official acceptance or endorsement by UN

Data Source : Bantul Health Department, 1st June 2006
Map Produced : 2nd June 2006